

ODEON TOWER - EXCLUSIVE

For sale

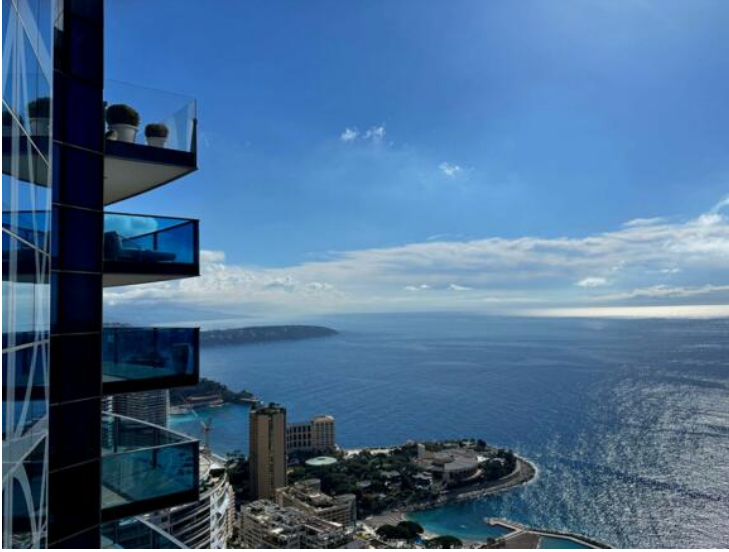
Price on request

<i>Product type</i> Apartment	<i>Num rooms</i> +5 rooms
<i>Building</i> Tour Odéon	<i>District</i> La Rousse - Saint Roman
<i>Living area</i> 880 m²	<i>Terrace area</i> 295 m²
<i>Total area</i> 1 175 m²	<i>Bedrooms</i> 5
<i>Parkings</i> 7	<i>Ref.</i> 517V15752A

SOLE AGENT Superb contemporary Duplex, with its breathtaking panoramic sea view, in a recent and prestigious residence of the Principality offering high quality services: indoor swimming pool, Spa, meeting room, cinema room, gym, top-of-the-range concierge, valet parking service. The 43 floor includes 1 entrance hall, 1 equipped kitchen + pantry, 1 double living room, 1 dining room, 1 'home cinema' room, 1 office, 1 bedroom with complete bathroom, 1 guest toilet. The upstairs landing is privat

SOLE AGENT Superb contemporary Duplex, with its breathtaking panoramic sea view, in a recent and prestigious residence of the Principality offering high quality services: indoor swimming pool, Spa, meeting room, cinema room, gym, top-of-the-range concierge, valet parking service. The 43 floor includes 1 entrance hall, 1 equipped kitchen + pantry, 1 double living room, 1 dining room, 1 'home cinema' room, 1 office, 1 bedroom with complete bathroom, 1 guest toilet. The upstairs landing is private as well as the storage room. The 44th floor has 1 master bedroom + bathroom, 1 living/dining room, 2 bedrooms with bathrooms, 1 service bedroom + shower room, laundry room, guest toilet. 7 large car parks. Price upon request.



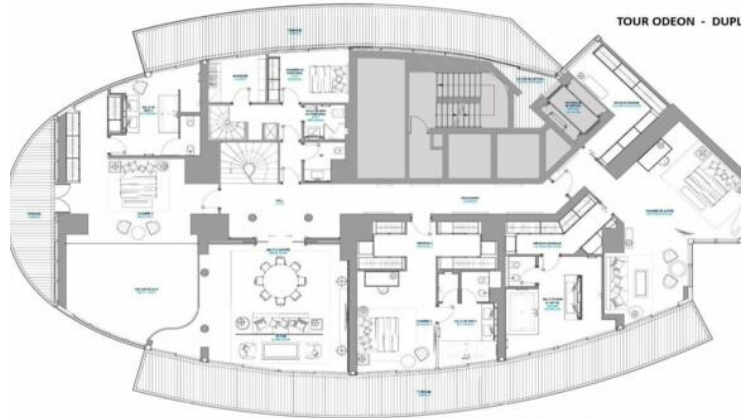


TOUR ODEON - DUPL

43ème étage



43ème étage
 - Intérieur : 422,80 M²
 - Terrasse : 147,70 M²
 - Pallier : 34,20 M²
 44ème étage
 - Intérieur : 422,80 M²
 - Terrasse : 147,80 M²
 Surface totale : 1175,40 M²



TOUR ODEON - DUPL

44ème étage



44ème étage
 - Intérieur : 422,80 M²
 - Terrasse : 147,80 M²
 43ème étage
 - Intérieur : 422,80 M²
 - Terrasse : 147,70 M²
 - Pallier : 34,20 M²
 Surface totale : 1175,40 M²

