



Pavillon Diana - Penthouse/roof

Sole agent

115 000 € / month

+ Service charges : 10.000 €

Rental

<i>Product type</i> Apartment	<i>Num rooms</i> 10
<i>Building</i> Pavillon Diana	<i>District</i> Moneghetti
<i>Living area</i> 693 m²	<i>Terrace area</i> 184 m²
<i>Total area</i> 877 m²	<i>Bedrooms</i> +5
<i>Bathrooms</i> +5	<i>Parkings</i> 4
<i>Cellar</i> 1	<i>Floor</i> 5-6-7-8
<i>Service charges</i> 10 000 €	<i>Condition</i> Luxurious services
<i>Release date</i> 01/07/ 2025	<i>Ref.</i> Pavillon Diana Penthouse/roof avec piscine @lux-rental

Luxury residence

Possibility to rent it fully and luxuriously furnished at 140.000 euros including charges.





Available from 1 July 2025

The Pavillon Diana, is located in a quiet and elegant residential area, is a luxury residence part of Monaco Luxury Rentals Signature.

This private Residence was built in 2020 by the renowned company: BATILUX Sam-construction & interior design.

Its consists of two lobbies , two lifts serving only 3 large prestigious apartments in order to offer optimal privacy, security and service.

This penthouse apartment of 877m2 is located on the top 4 floors of the building.

The 5 th floor is composed by 4 complete suites with dressing rooms and bathrooms, as well as a maid's bedroom with wardrobe and shower room.

The 6 th floor is composed by a triple living room with 6 meters high ceilings, a very large kitchen adjoining the dining room, a gorgeous wine cellar facing the living room, a pantry, a cloakroom, a guest toilet, a hallway with cupboards and a large laundry room.

The 7 th floor is entirely dedicated to the master space, with a very large bedroom, a large dressing room, a very large bathroom with balcony overlooking the port, the sea and the palace, a hammam, a sauna, a spa, separate men's and women's toilets, library/office.

The roof top at the 8 th floor includes an infinity pool overlooking the port /the palace and sea with south east exposure, a shower/bathroom, summer kitchen, storage, and a large relaxation area.

The elevator and the sumptuous staircase leads to all floors.

A 25 m2 studio located on the lower floors of the residence is also available.

Four car parks with washing area + visitor parking lots and a large cellar.

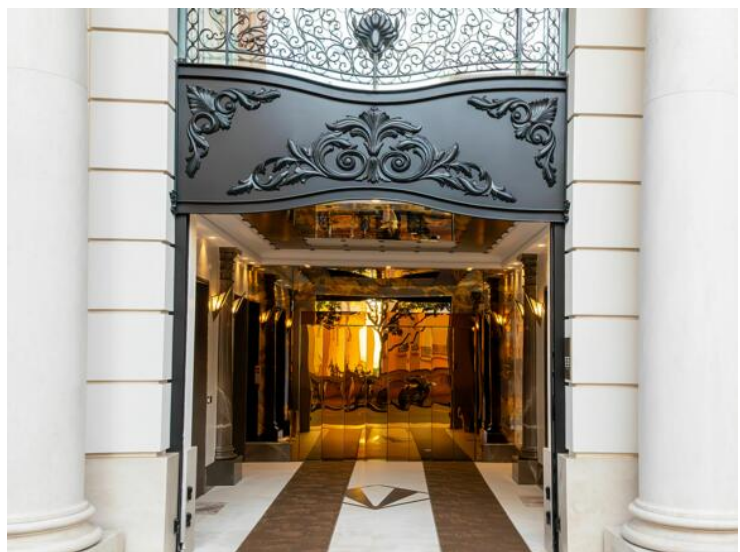
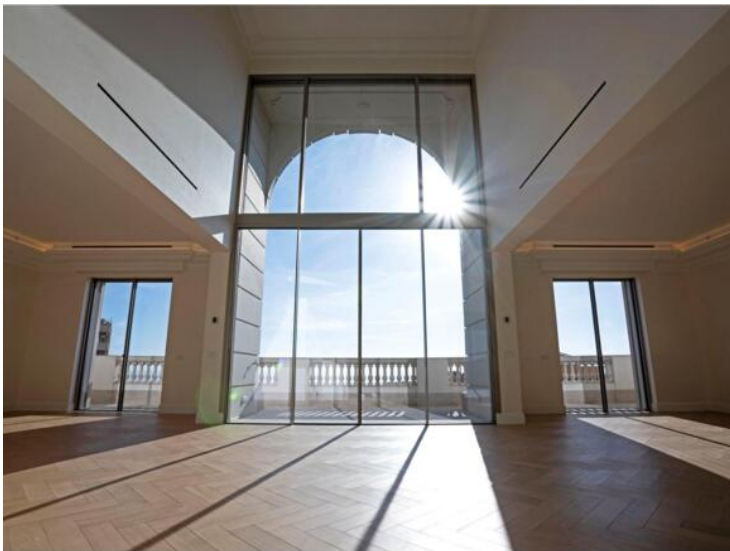
Security:

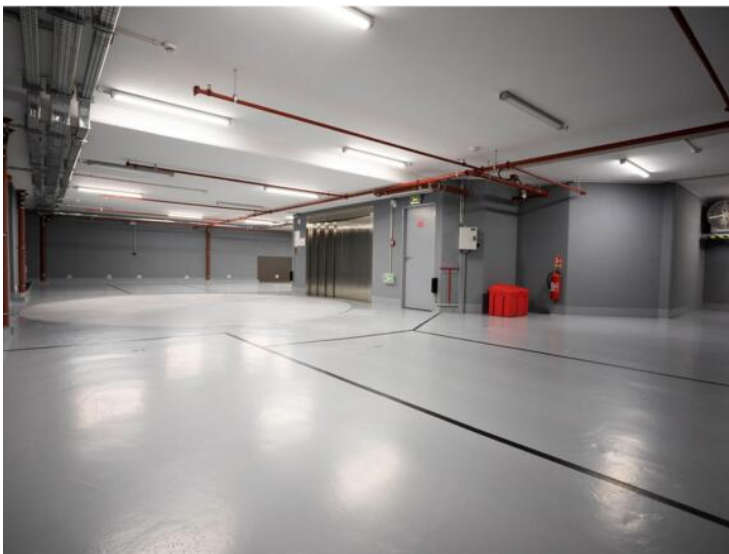
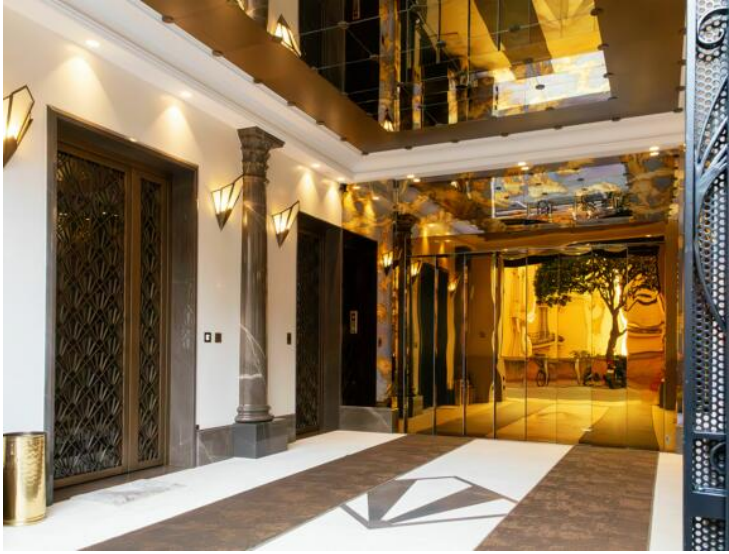
Building entrance access with badges and keys and lift access with badges and code. Video cameras in common areas.

Optional services : cleaning service, laundry.

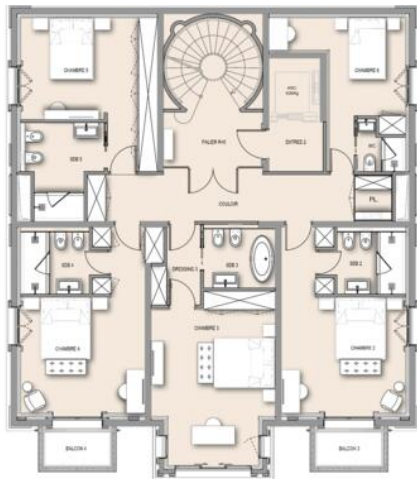
Minimum 2 year lease, deposit of 5 months rent.





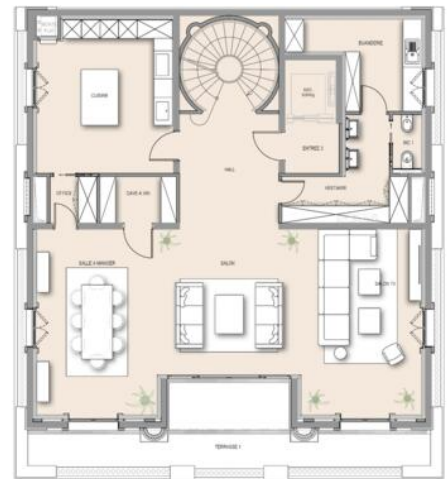


Niveau R+5



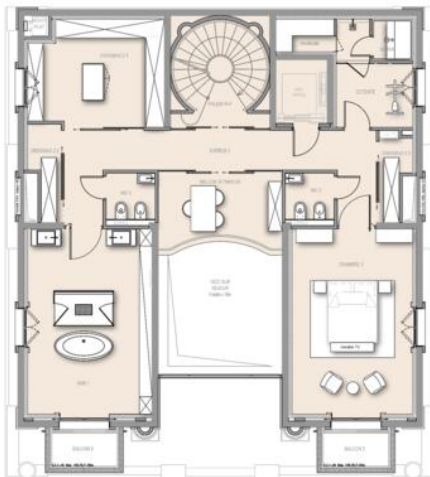
CHANTIER:
 PAVILLON DIANA
 Date: 31/01/2024
 BATELUX
 Echelle: 1/50 sur A3

Niveau R+6



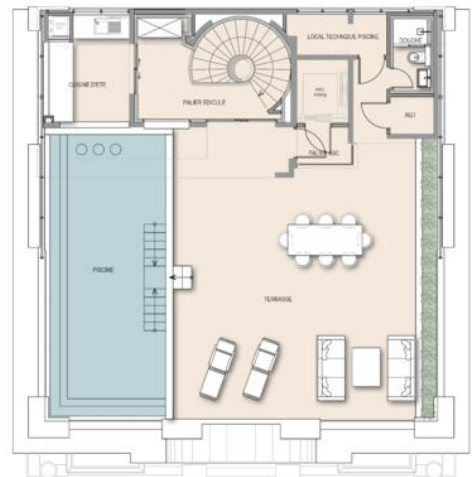
CHANTIER:
 PAVILLON DIANA
 Date: 31/01/2024
 BATELUX
 Echelle: 1/50 sur A3

Niveau R+7
 (Appt. n°1)
 Niveau +104.20



CHANTIER:
 PAVILLON DIANA
 Date: 31/01/2024
 BATELUX
 Echelle: 1/50 sur A3

Toiture terrasse



CHANTIER:
 PAVILLON DIANA
 Date: 31/01/2024
 BATELUX
 Echelle: 1/50 sur A3

