



## SOLE AGENT - EXCEPTIONAL TOWNHOUSE IN THE HEART OF MONTE-CARLO

For sale

Sole agent

Price on request

|  |  |
|--|--|
| <i>Product type</i><br><b>Apartment</b>          | <i>Num rooms</i><br><b>4 rooms</b>               |
| <i>Building</i><br><b>Villa Palazzino</b>        | <i>District</i><br><b>Monte-Carlo</b>            |
| <i>Living area</i><br><b>299 m<sup>2</sup></b>   | <i>Terrace area</i><br><b>30 m<sup>2</sup></b>   |
| <i>Garden area</i><br><b>14,50 m<sup>2</sup></b> | <i>Total area</i><br><b>333,50 m<sup>2</sup></b> |
| <i>Bedrooms</i><br><b>3</b>                      | <i>Bathrooms</i><br><b>3</b>                     |
| <i>Parkings</i><br><b>3</b>                      | <i>Cellar</i><br><b>1</b>                        |
| <i>Annual costs</i><br><b>1 200 €</b>            | <i>Condition</i><br><b>Luxurious services</b>    |
| <i>Furnished</i><br><b>Yes</b>                   | <i>Release date</i><br><b>Quickly</b>            |
| <i>Ref.</i><br><b>PALAZZINOTH3</b>               |  |

This new residence with concierge is peacefully located on the elegant "rue Bel Respiro", just steps away from the Casino square and its gardens, The residence VILLA PALAZZINO is completed to the highest standards and finished with meticulous workmanship

This exceptional TOWNHOUSE, a real urban house, typical of the chic districts of London and unique to



MonteCarlo-RealEstate.com

Page  
1/4

Ref. : PALAZZINOTH3

Ce document ne fait partie d'aucune offre ou contrat. Toutes mesures, surfaces et distances sont approximatives. Le descriptif et les plans ne sont donnés qu'à titre indicatif et leur exactitude n'est pas garantie. Les photographies ne montrent que certaines parties de la propriété. L'offre est valable sauf en cas de vente, retrait de vente, changement de prix ou d'autres conditions, sans préalable.

Monaco is sheltered by the trees and flowery massifs that border its private garden. Fully furnished, it offers luxury services: taylor-made furniture from FERRE, RALPH LAUREN and ETRO. The interior design is signed JUMBO COLLECTION, the Italian designer of luxury homes. TOWNHOUSE is equipped with alarm and has its private elevator.

TOWNHOUSE is composed as follows:

1st floor: very private space with a master bedroom opening on to a balcony with an en-suite bathroom opening onto a relaxation and meditation space, large dressing room and beautiful office.

Ground floor: a large living/dining room, a spacious tailor made and fully equipped kitchen with MIELE and GAGGENAU appliances, guest toilet. Private garden.

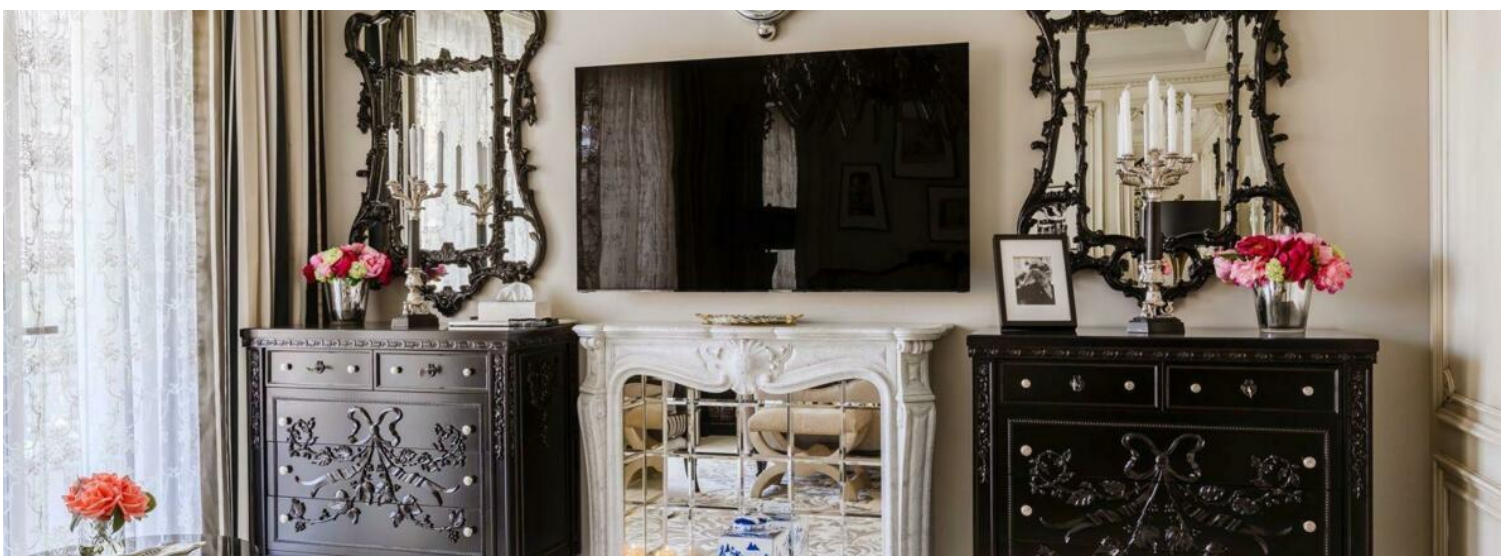
Lower ground floor: A large bedroom finely decorated in Chinese style, integrating old and modern elements with an en-suite bathroom and dressing room, and, another classic and elegant bedroom with its office and shower room. Both opening onto a planted patio.

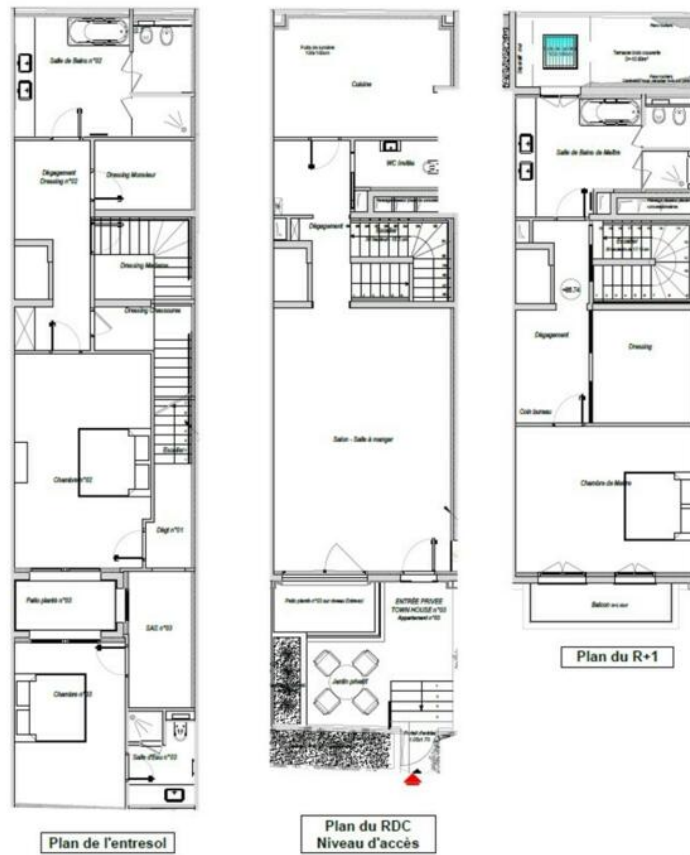
3 Parking lots, equipped with electric terminals

1 Spacious cellar









Nota: Le descriptif, les plans et les surfaces ne sont donnés qu'à titre indicatif et leur exactitude n'est pas garantie

