



Expansive and exceptional family apartment

20 000 € / month

+ Service charges : 5.300 €

Rental

<i>Product type</i> Apartment	<i>Num rooms</i> 6
<i>Building</i> Le Cimabue	<i>District</i> Fontvieille
<i>Living area</i> 324 m²	<i>Terrace area</i> 85 m²
<i>Total area</i> 409 m²	<i>Bedrooms</i> 5
<i>Bathrooms</i> 5	<i>Parkings</i> 3
<i>Cellar</i> 1	<i>Service charges</i> 5 300 €
<i>Condition</i> Very good condition	<i>Release date</i> 01/04/2025
<i>Ref.</i> Cimabue 3rd	

Stunning apartment with breathtaking views of the port, located in a prestigious residence featuring a gym and an indoor swimming pool.

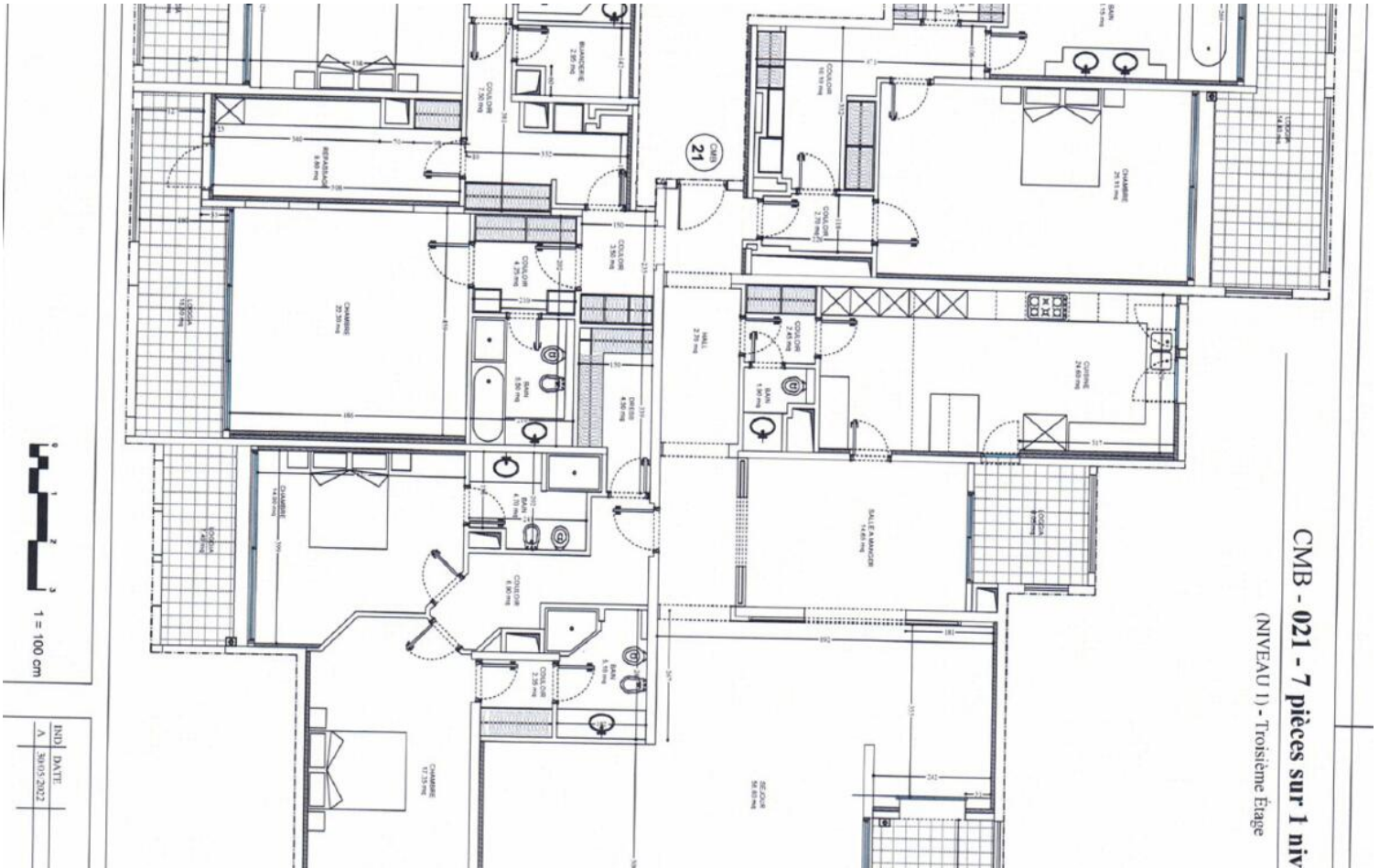
This magnificent apartment, boasting exceptional dimensions, opens onto a spacious entrance hall. To the right, it leads to four en-suite bedrooms, each with its own terrace. To the left, you'll find a fifth en-suite bedroom, a fully equipped kitchen, and an elegant dining room, also extended by terraces.



A vast living room, bathed in natural light, offers breathtaking views of the sea and the port, creating a setting that is both luxurious and serene.

Three parking spaces within the building and a storage cellar complete this exceptional property.





CMB - 021 - 7 pièces sur 1 niv
 (NIVEAU 3) - Troisième Etage

