



## Luxury Apartment for Rent

**50 000 € / month**

+ Service charges : 5.500 €

Rental

|   |  |
|---|--|
| <i>Product type</i><br><b>Apartment</b>           | <i>Num rooms</i><br><b>6</b>                     |
| <i>Building</i><br><b>Le Metropole</b>            | <i>District</i><br><b>Carré d'Or</b>             |
| <i>Living area</i><br><b>281,50 m<sup>2</sup></b> | <i>Total area</i><br><b>325,80 m<sup>2</sup></b> |
| <i>Bedrooms</i><br><b>4</b>                       | <i>Bathrooms</i><br><b>5</b>                     |
| <i>Parkings</i><br><b>4</b>                       | <i>Cellar</i><br><b>1</b>                        |
| <i>Floor</i><br><b>5</b>                          | <i>Service charges</i><br><b>5 500 €</b>         |
| <i>Ref.</i><br><b>PPMCL5A2</b>                    |  |

Prestigious 5th-Floor Apartment in the Renowned Metropole Residence

### Luxury Apartment for Rent - Flat 5A2, Metropole Residence

### Prestigious 5th-Floor Apartment in the Renowned Metropole Residence

Discover an exceptional standard of living in this distinguished 5th-floor apartment, Flat N° 5A2, situated within the esteemed **Metropole Residence**. This exquisite property offers unparalleled amenities and



commanding city views, catering to discerning tenants who seek sophistication, comfort, and exclusivity.

**Key Features:**

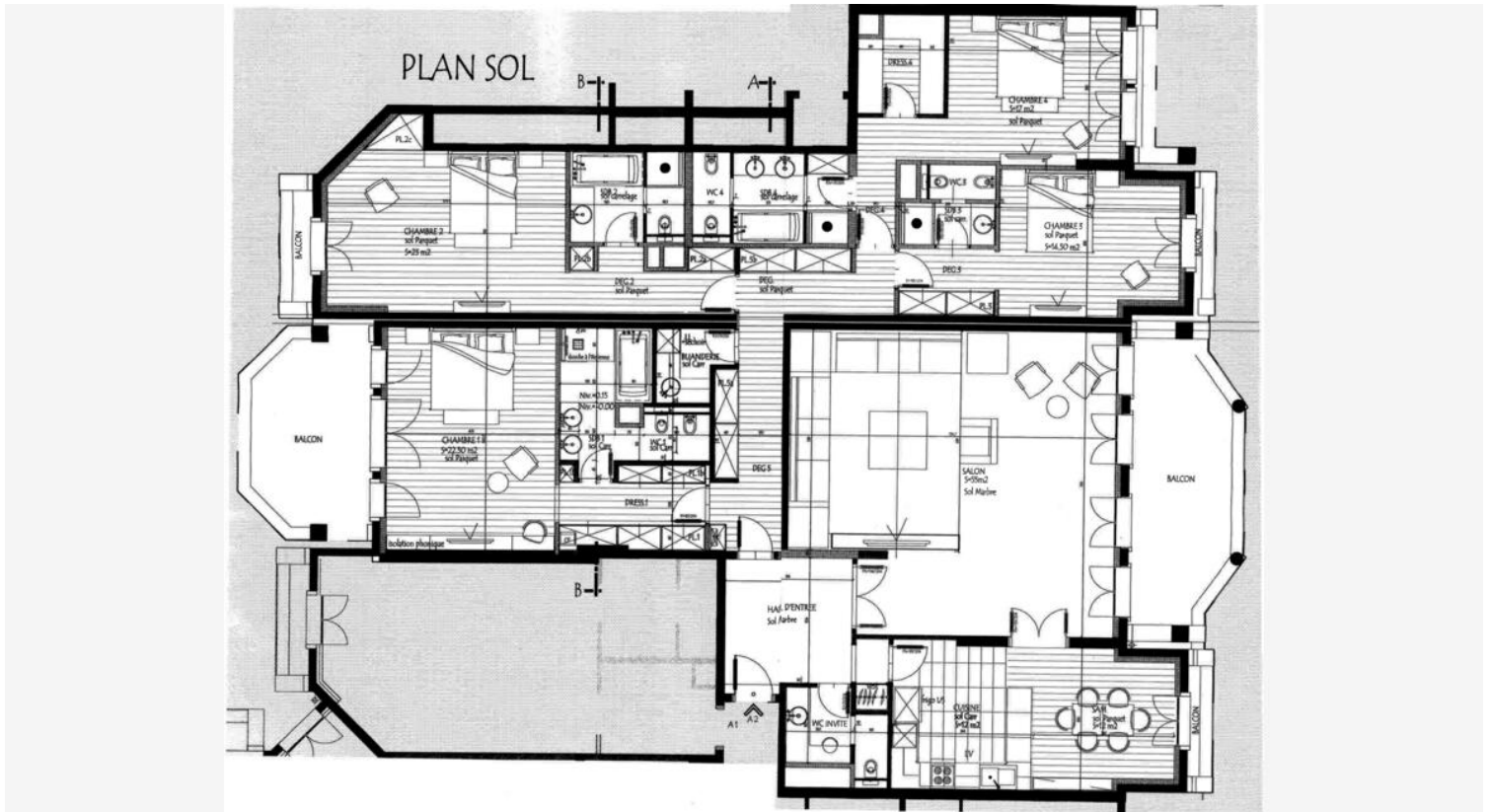
- **Spacious and Elegant Living Spaces:** Impeccably designed interiors featuring premium finishes.
- **Prime Location:** Nestled in a highly coveted district, ensuring convenience and prestige.
- **Refined Luxury:** Outfitted with state-of-the-art appliances and superior craftsmanship.
- **Parkings:** Inclusive of **four dedicated parking spaces**.
- **Additional Storage:** **One private cellar** for supplementary space.
- **Comprehensive Services:** Access to premium maintenance and concierge services.

**Lease Details:**

**Monthly Rent: €50,500**

**Monthly Rental Charges: €5,500**

**Lease Term: Three years**





RESIDENCE  
METROPOLE

5A2

**6 PIÈCES**  
ROOMS

5<sup>e</sup> étage  
5<sup>th</sup> floor



|  |                            |
|--|----------------------------|
| EXPOSITION<br>EXPOSURE                 | EST - OUEST<br>EAST - WEST |
| SURFACE INTÉRIEURE<br>INTERIOR SURFACE | 281,50 M <sup>2</sup>      |
| SURFACE GLOBALE<br>TOTAL SURFACE       | 325,80 M <sup>2</sup>      |

