

## 2 BEDROOM APARTMENT FOR RENT - PARC SAINT ROMAN

Sole agent

8 000 € / month

+ Service charges : 600 €

Rental

|   |   |
|---|---|
| <b>Product type</b><br><b>Apartment</b>       | <b>Num rooms</b><br><b>3 rooms</b>                |
| <b>Building</b><br><b>Parc Saint Roman</b>    | <b>District</b><br><b>La Rousse - Saint Roman</b> |
| <b>Living area</b><br><b>75 m<sup>2</sup></b> | <b>Terrace area</b><br><b>20 m<sup>2</sup></b>    |
| <b>Total area</b><br><b>95 m<sup>2</sup></b>  | <b>Parking</b><br><b>1</b>                        |
| <b>Cellar</b><br><b>1</b>                     | <b>Floor</b><br><b>5</b>                          |
| <b>Service charges</b><br><b>600 €</b>        | <b>Condition</b><br><b>Good condition</b>         |
| <b>Release date</b><br><b>Now</b>             | <b>Ref.</b><br><b>MIMPSRLOC</b>                   |

This stunning two-bedroom apartment is located on the 5th floor of the Le Tour building, within the prestigious private residence Le Parc Saint Roman. This upscale residence offers premium amenities, including a 24/7 concierge service, a swimming pool with a pool house, a fitness room, a solarium, a snack bar, and even a car wash area.

The apartment boasts breathtaking views of the mountains and Cap Martin. It comes with a private parking space and a storage room, both conveniently located within the building.

Consisting of an entrance with built-in closets, two bedrooms, two bathrooms, a fully equipped kitchen, a



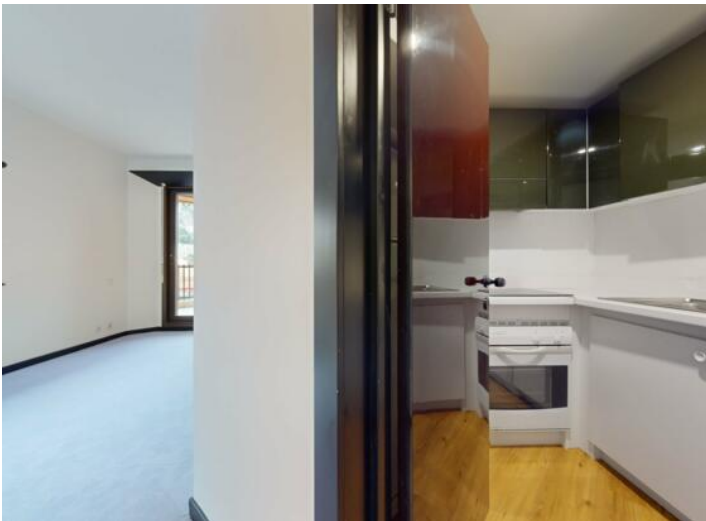
MonteCarlo-RealEstate.com

Page  
1/4

Ref. : MIMPSRLOC

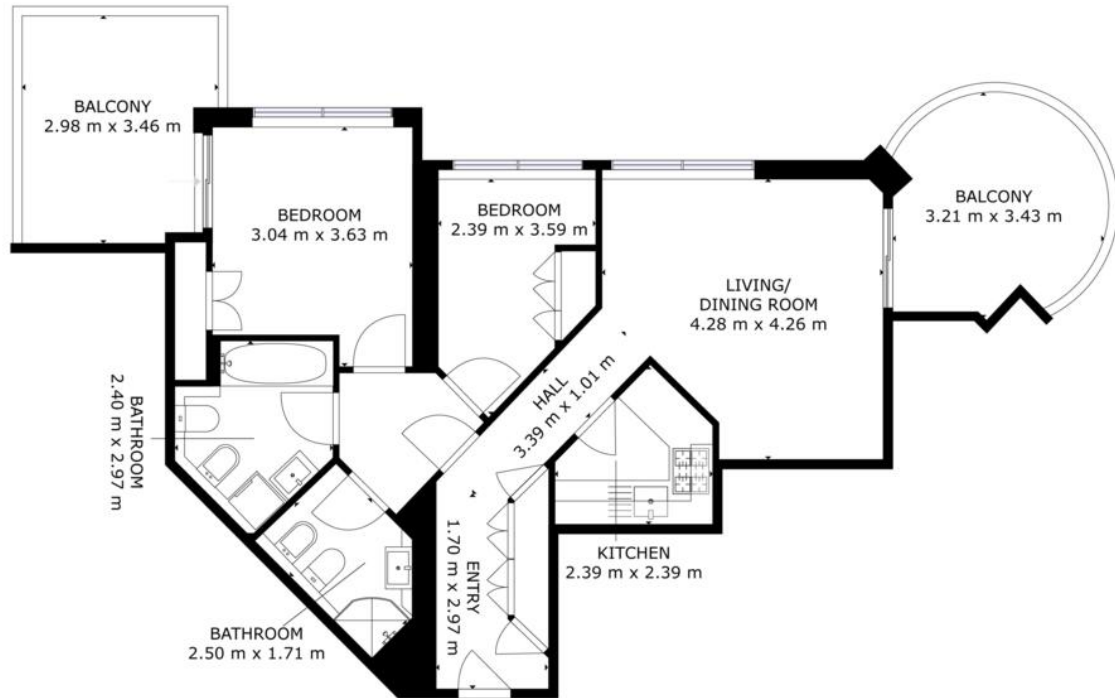
Ce document ne fait partie d'aucune offre ou contrat. Toutes mesures, surfaces et distances sont approximatives. Le descriptif et les plans ne sont donnés qu'à titre indicatif et leur exactitude n'est pas garantie. Les photographies ne montrent que certaines parties de la propriété. L'offre est valable sauf en cas de vente, retrait de vente, changement de prix ou d'autres conditions, sans préalable.

bright living room, two spacious terraces, as well as a cellar and a parking space within the building.









FLOOR 1

GROSS INTERNAL AREA  
EXCLUDED AREAS: BALCONY: 20 m<sup>2</sup>  
TOTAL: 63 m<sup>2</sup>  
SIZES AND DIMENSIONS ARE APPROXIMATE, ACTUAL MAY VARY

