

ODEON TOWER - EXCLUSIVE

180 000 € / month
(Service charges included)

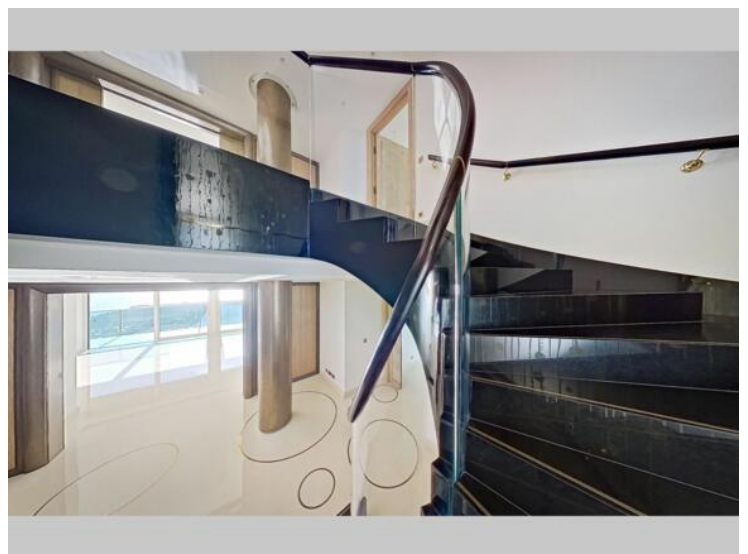
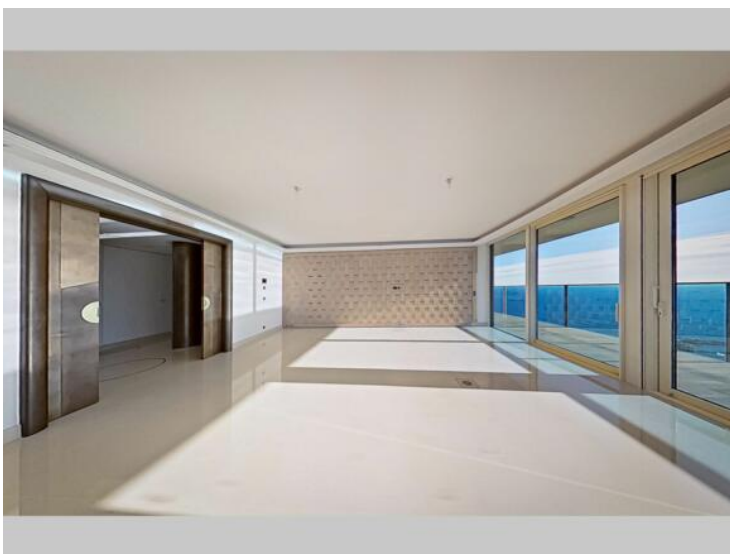
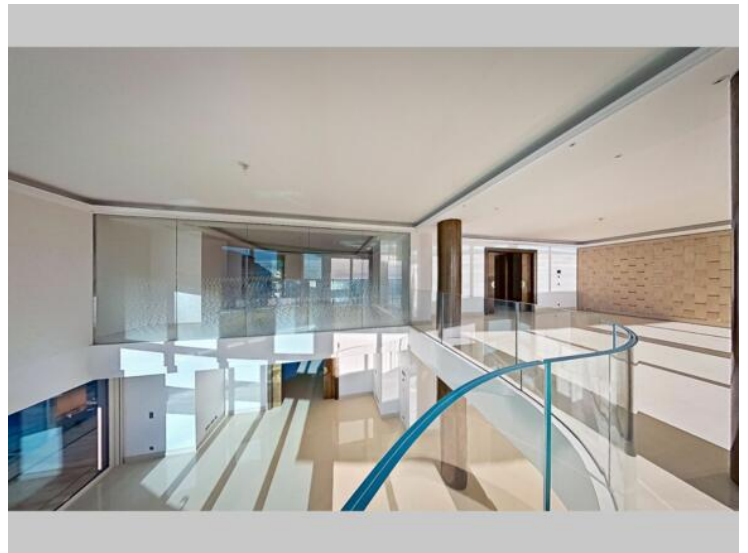
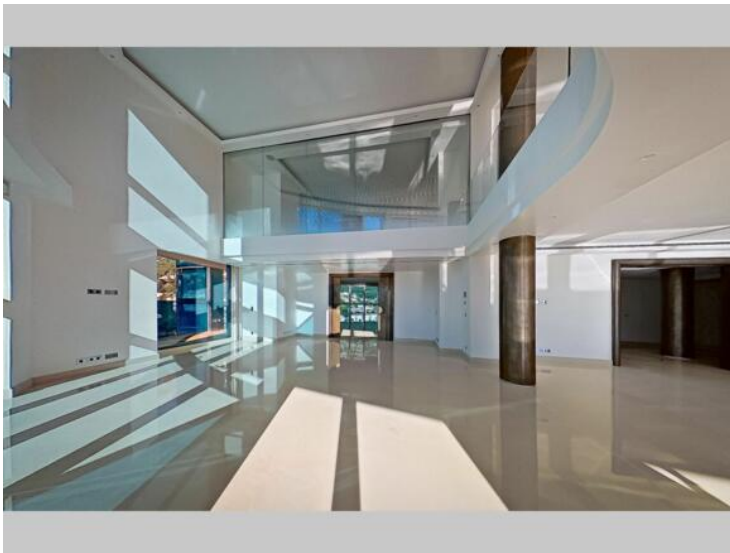
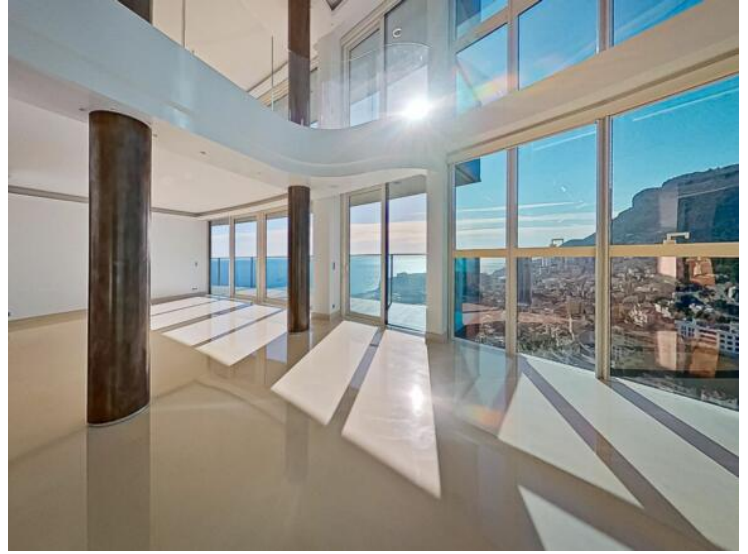
Rental

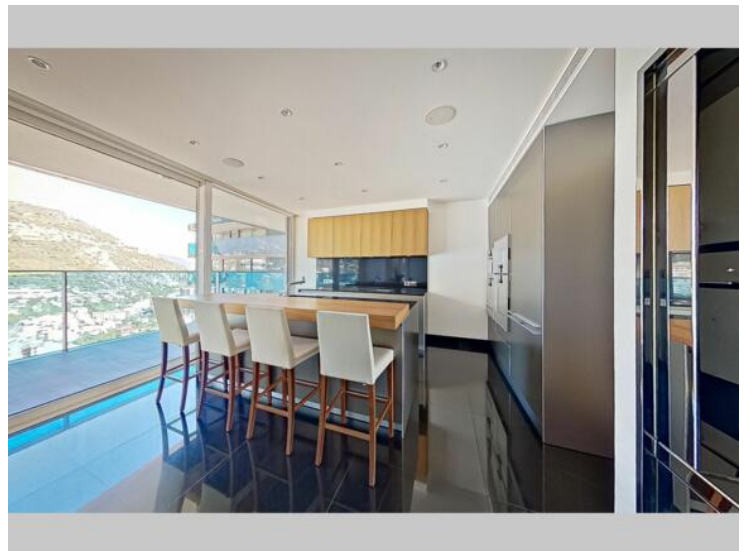
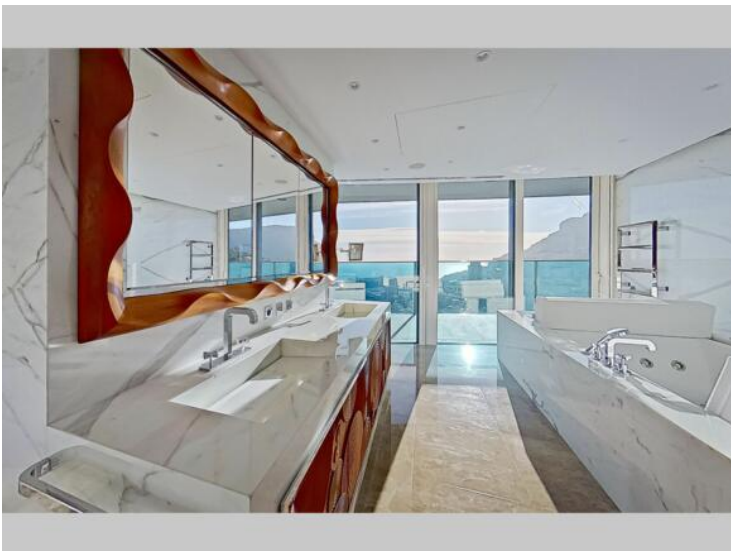
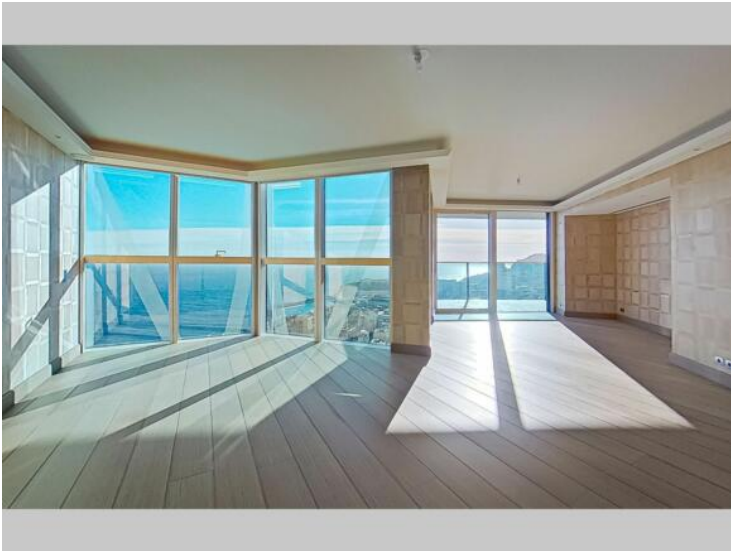
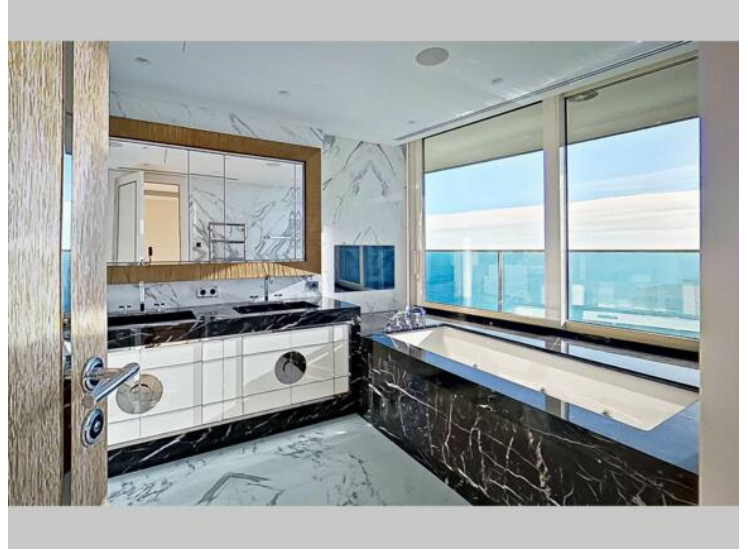
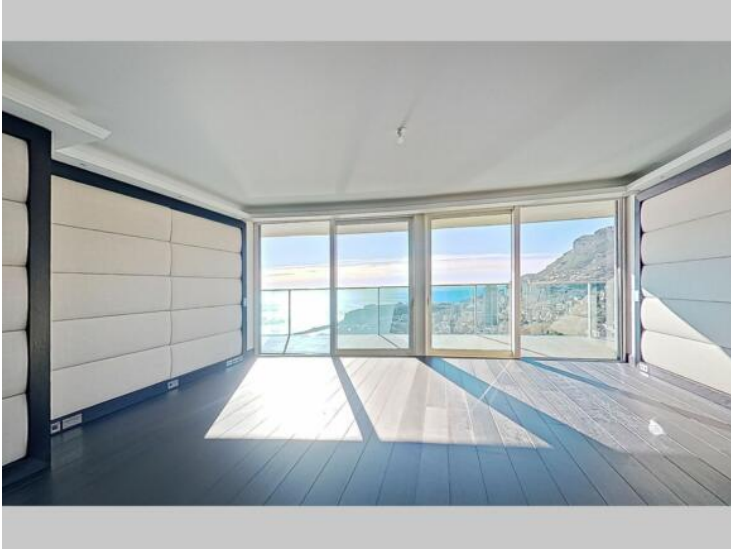
<i>Product type</i> Apartment	<i>Num rooms</i> 6
<i>Building</i> Tour Odéon	<i>District</i> La Rousse - Saint Roman
<i>Living area</i> 880 m²	<i>Terrace area</i> 295 m²
<i>Total area</i> 1 175 m²	<i>Bedrooms</i> 5
<i>Parkings</i> 7	<i>Ref.</i> 517L11137A

EXCLUSIVITY Between sky and sea, with a breathtaking view, this contemporary duplex, with large volumes and lots of light offers a unique living experience. The Odeon Tower, one of the most prestigious residences in the Principality, offers unparalleled service, such as a 24-hour Concierge, valet and shuttle service, an indoor swimming pool, a spa, a business center and room service. The 43rd floor includes an entrance hall, a double living room, a dining room, a fitted kitchen with pantry, a &

EXCLUSIVITY Between sky and sea, with a breathtaking view, this contemporary duplex, with large volumes and lots of light offers a unique living experience. The Odeon Tower, one of the most prestigious residences in the Principality, offers unparalleled service, such as a 24-hour Concierge, valet and shuttle service, an indoor swimming pool, a spa, a business center and room service. The 43rd floor includes an entrance hall, a double living room, a dining room, a fitted kitchen with pantry, a "home cinema" room, an office, a bedroom with dressing room and en-suite bathroom, a guest toilet. The floor landing is private. The 44th floor has a living room, a master bedroom with large dressing rooms and en-suite bathroom, two large bedrooms each with an en-suite bathroom, a laundry room and a service bedroom with shower room. 7 parking spaces and a cellar complete this property. Provisions for charges: €18,000 per month.





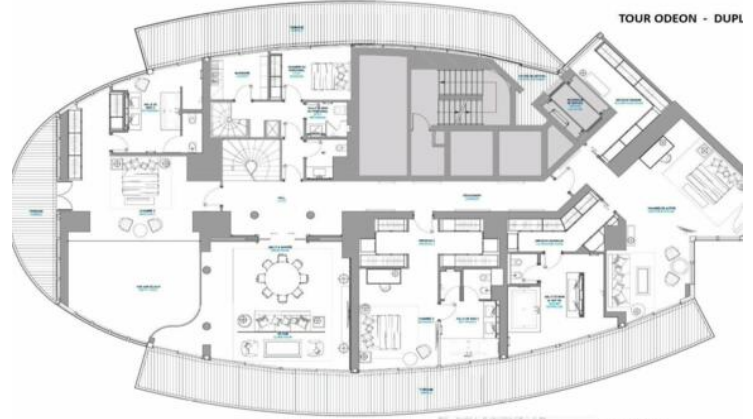




43ème étage



43ème étage
 - Intérieur : 422,80 M²
 - Terrasse : 147,70 M²
 - Pallier : 34,20 M²
44ème étage
 - Intérieur : 422,80 M²
 - Terrasse : 147,80 M²
 Surface totale : 1175,40 M



44ème étage



44ème étage
 - Intérieur : 422,80 M²
 - Terrasse : 147,80 M²
43ème étage
 - Intérieur : 422,80 M²
 - Terrasse : 147,70 M²
 - Pallier : 34,20 M²
 Surface totale : 1175,40 M²

