

Luminous Offices With Double Access & Vitrine

Professional sale

2 756 000 €

<i>Product type</i> Office	<i>Num rooms</i> 3 rooms
<i>Building</i> Le Michelangelo	<i>District</i> Fontvieille
<i>Living area</i> 87 m²	<i>Cellar</i> 1
<i>Release date</i> 30/09/2026	<i>Ref.</i> MCE37

The office is currently rented at 3687 euros/month + TVA + fees until September 30, 2026, offering an immediate income stream for investors or a deferred move-in opportunity for future users.

Discover this beautifully designed office space, perfect for your business needs. With a generous area of 87 square meters, the layout features three spacious rooms, one WC, a laundry room, and a dedicated storage space.

The office boasts two separate entrances, offering excellent accessibility for clients and staff alike. A vitrine invites natural light, enhancing the workspace and providing excellent visibility.

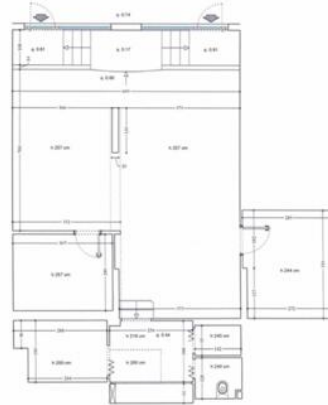
Enjoy a peaceful garden view that brings a sense of tranquility to your daily work environment. Located in a calm and sought-after area, this office is ideal for businesses looking for a productive and inspiring workspace.





MICHELANGELO - LOCAUX COMMERCIAUX
MICHELANGELO 077

SUPERFICIE GENERALE 85.50 MQ



MICHELANGELO

GRUPE MEMMO
Via C. de la...
Tel: 077-99-99-76-80

Etage : MICHELANGELO 077
LOCAUX COMMERCIAUX

IND. DATE
A 11/10/2024

