



## Bay House - Prestigious apartment, 8 rooms

Rental

Sole agent

Rent on request

<i>Product type</i> <b>Apartment</b>	<i>Num rooms</i> <b>8</b>
<i>Building</i> <b>Bay House</b>	<i>District</i> <b>Larvotto</b>
<i>Living area</i> <b>747,70 m<sup>2</sup></b>	<i>Terrace area</i> <b>134,90 m<sup>2</sup></b>
<i>Total area</i> <b>903,70 m<sup>2</sup></b>	<i>Bedrooms</i> <b>+5</b>
<i>Bathrooms</i> <b>+5</b>	<i>Parkings</i> <b>+5</b>
<i>Cellar</i> <b>1</b>	<i>Floor</i> <b>3</b>
<i>Service charges</i> <b>12 500 €</b>	<i>Condition</i> <b>New</b>
<i>Release date</i> <b>1er février 2025</b>	<i>Ref.</i> <b>BAY/T8AR49</b>

Located in the exclusive neighbourhood of Larvotto, Bay House provides residents with a whole new level of luxury living in Monaco.

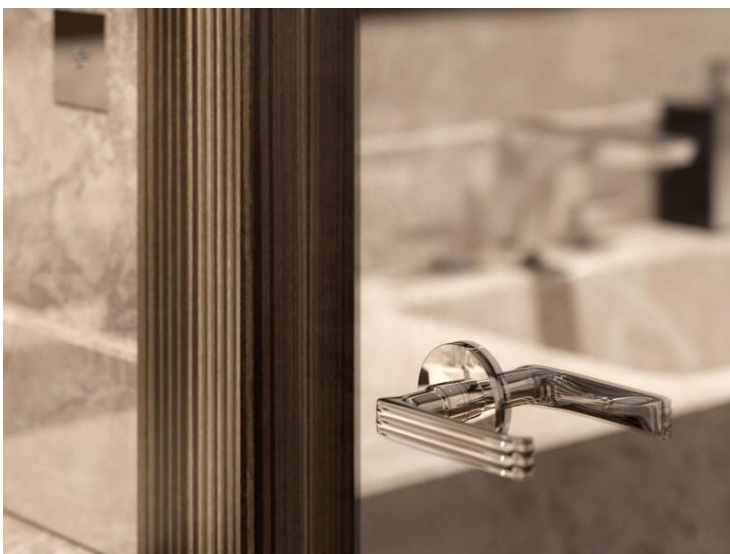
The T8A features six bedrooms, an office, staff quarters, generous reception areas, floor-to-ceiling windows, and south-facing wraparound balconies that provide panoramic views of the Mediterranean. The exceptional depth of these balconies not only creates a true outdoor living space but also provide much-appreciated shade indoors. The furnishings and materials are of the highest quality, crafted and assembled by highly skilled artisans. State-of-the-art home automation systems seamlessly control lighting, air conditioning, and the video intercom.

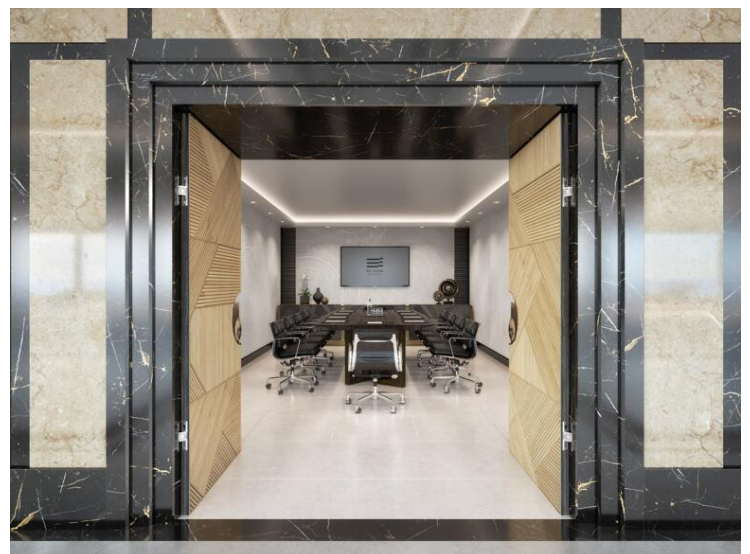
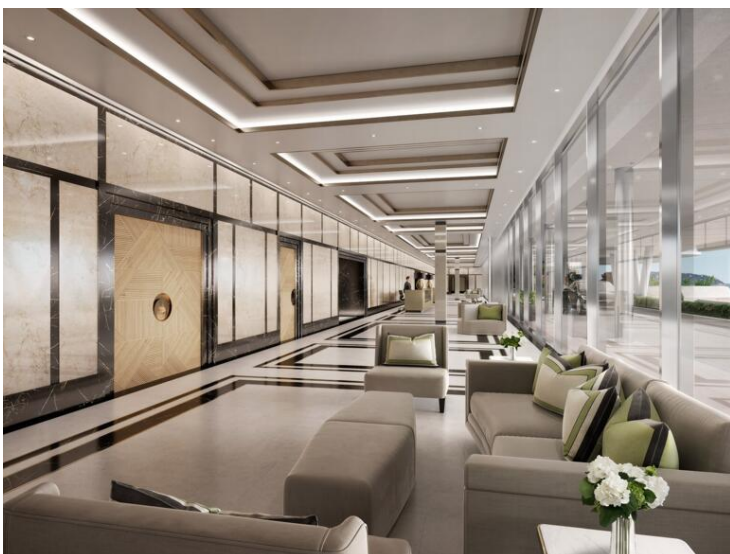
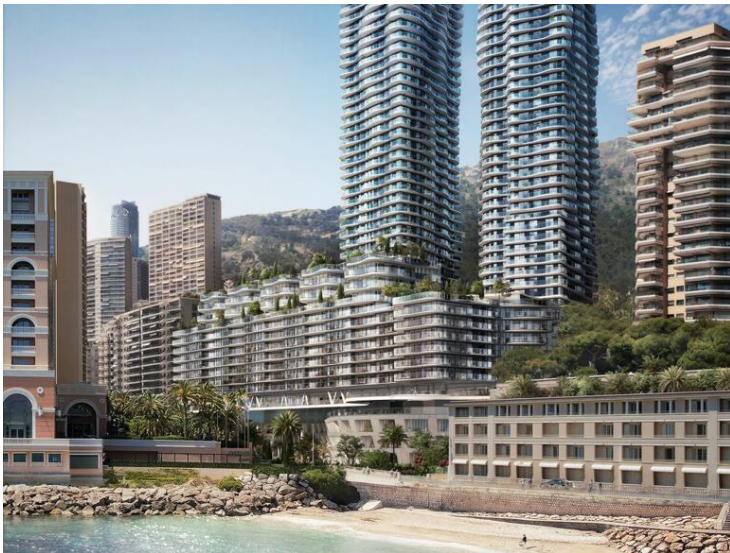


This apartment offers direct access to six private parking spaces and a cellar conveniently located at the rear of the property.

Bay House provides an unparalleled range of services and amenities in Monaco. With a 24/7 concierge service, the residence features exclusive offerings such as a wellness center, fitness rooms, meeting rooms, valet, and shuttle services—all easily accessible via a dedicated mobile app.. Residents also benefit from access at three levels: Boulevard d'Italie, Boulevard du Larvotto, and Avenue Princesse Grace.









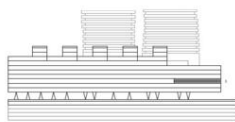


APPARTEMENT 8 PIÈCES, T8A  
3<sup>ÈME</sup> ÉTAGE, R3-9

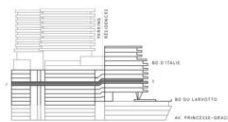
CÔTÉ MER



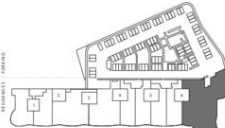
ÉLEVATION FRONTALE



ÉLEVATION LATÉRALE



PLAN D'ÉTAGE



SITUATION



SURFACES

INTÉRIEUR :	747.70 M <sup>2</sup>
TERRASSE :	134.90 M <sup>2</sup>
PALIER D'ÉTAGE :	21.10 M <sup>2</sup>
(à réviser et préciser)	
<b>SURFACE TOTALE :</b>	<b>903.70 M<sup>2</sup></b>



Les dimensions sont approximatives et sujettes aux variations et modifications prévues à tout projet de construction. Le promoteur s'engage à garantir que les mesures contenues dans l'offre de vente. Les contours des balcons varient d'un étage à l'autre. Le mobilier est présenté à titre indicatif et ne constitue pas une offre contractuelle. (Document non contractuel)  
All dimensions are approximate and subject to normal construction variances and alterations. Sponsor makes no representation or warranty in the Purchase Agreement. The content of the brochure varies from one floor to the next. All furniture is for illustrative purposes only and does not constitute a contract. (This is a non-binding document.)

