

## MONACO'S FINEST, DISCREET, VIP RESIDENCE - CENTRE, SERVICED

Rental

110 000 € / month

<i>Product type</i> <b>Apartment</b>	<i>Num rooms</i> <b>6</b>
<i>Building</i> <b>Le Balmoral</b>	<i>District</i> <b>Carré d'Or</b>
<i>Living area</i> <b>346 m<sup>2</sup></b>	<i>Bedrooms</i> <b>4</b>
<i>Bathrooms</i> <b>4</b>	<i>Parkings</i> <b>3</b>
<i>Cellar</i> <b>1</b>	<i>Floor</i> <b>Duplex</b>
<i>Condition</i> <b>Luxurious services</b>	<i>Release date</i> <b>Early 2025</b>
<i>Ref.</i> <b>CO_BR_3</b>	

HIGH CEILINGS, VAST ROOMS, EXQUISITE VIEWS OVER THE PORT HERCULES AND PRINCE'S PALACE IN THE PRESTIGIOUS "BALMORAL"

Exceptional home in the centre, near the best hotels and restaurants. This wonderfully restored palace was rebuilt recently and retains exceptionally high ceilings and period features, including grand volumes and the use of traditional materials. This glorious duplex property includes 3 large bedroom suites, a service room with shower, a fully equipped kitchen, a laundry and staff area, a magnificent reception overlooking the port, 3 parking spaces, and 1 cellar. The residence is serviced and the rental includes water, electricity, air-conditioning, access to a large gymnasium with pool and spa, Also, a 24-hour concierge and room service is



[MonteCarlo-RealEstate.com](https://MonteCarlo-RealEstate.com)

Page  
1/4

Ref. : CO\_BR\_3

Ce document ne fait partie d'aucune offre ou contrat. Toutes mesures, surfaces et distances sont approximatives. Le descriptif et les plans ne sont donnés qu'à titre indicatif et leur exactitude n'est pas garantie. Les photographies ne montrent que certaines parties de la propriété. L'offre est valable sauf en cas de vente, retrait de vente, changement de prix ou d'autres conditions, sans préalable.

on call.

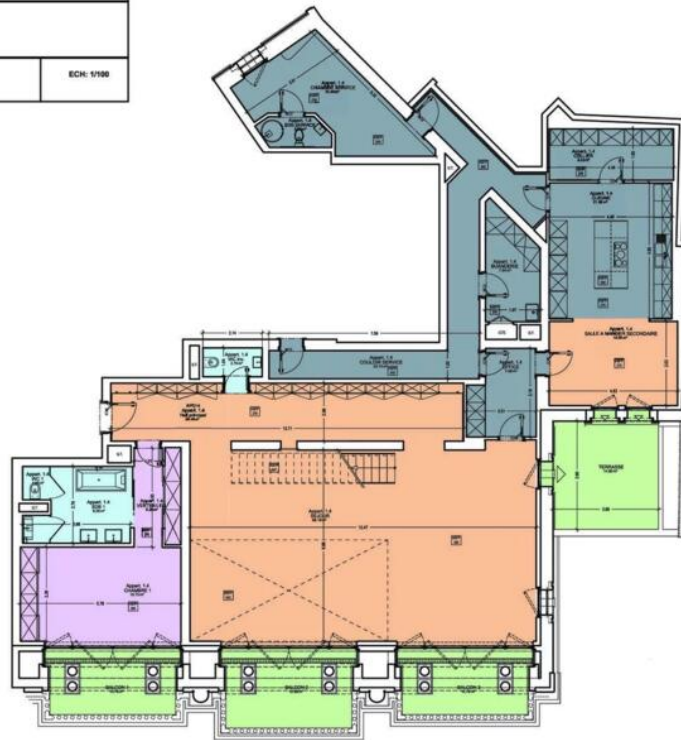




- RESIDENCE HOTELIERE BALMORAL -

Appartement 1 Niv 1

ECH: 1/100



0 1 2 3 4 5



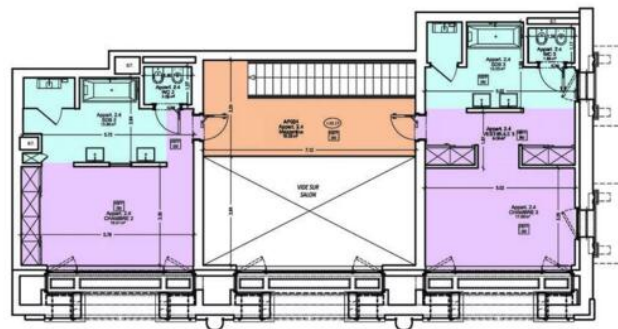
SURFACES

TOTAL NIVEAU 1	255,00 m <sup>2</sup>
TOTAL NIVEAU 2	91,24 m <sup>2</sup>
<b>TOTAL GENERAL</b>	<b>346,24 m<sup>2</sup></b>
TERRASSES	49,34 m <sup>2</sup>

- RESIDENCE HOTELIERE BALMORAL -

Appartement 1 Niv 2

ECH: 1/100



0 1 2 3 4 5



SURFACES

TOTAL NIVEAU 1	255,00 m <sup>2</sup>
TOTAL NIVEAU 2	91,24 m <sup>2</sup>
<b>TOTAL GENERAL</b>	<b>346,24 m<sup>2</sup></b>

