

LARGE OFFICE WITH LARGE WINDOW - FONTVIEILLE

Professional sale

3 500 000 €

<i>Product type</i> Office	<i>Num rooms</i> -
<i>Building</i> Raphael	<i>District</i> Fontvieille
<i>Total area</i> 94 m²	<i>Floor</i> Ground floor
<i>Annual costs</i> 4 800 €	<i>Ref.</i> RAPH 725-7250

LARGE OFFICE WITH LARGE WINDOW - FONTVIEILLE

This office is located in the port of Fontvieille, overlooking the gardens, ensuring a quiet location.

This office is located in the port of Fontvieille, overlooking the gardens, ensuring a quiet location. The space has a large window that naturally illuminates the office.

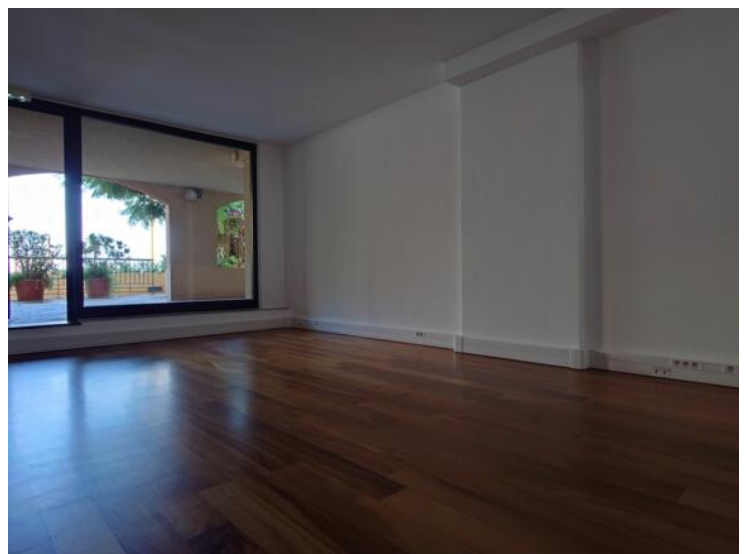
It consists of a main room with several smaller offices separated by glass partitions. It also has two restrooms and two access doors.

The terms of the lease are as follows: 12-month contract renewable for another 12 months, plus possible renewal for another 11 months. For a total of 35 months. The tenant must then vacate the premises.

The rent is 7,250 euros per month + 1,450 euros VAT and 400 euros additional expenses per month.

The office is also for sale.









Résidence « Le Raphael »
 Bureaux n° 725-7520

