

## 3-bedrooms apartment in most prestigious address of Monaco, the One Monte-Carlo

**80 000 € / month**  
(Service charges included)

Rental

<i>Product type</i> <b>Apartment</b>	<i>Num rooms</i> <b>5 rooms</b>
<i>Building</i> <b>One Monte-Carlo</b>	<i>District</i> <b>Carré d'Or</b>
<i>Living area</i> <b>298 m<sup>2</sup></b>	<i>Terrace area</i> <b>78 m<sup>2</sup></b>
<i>Total area</i> <b>376 m<sup>2</sup></b>	<i>Bedrooms</i> <b>2</b>
<i>Bathrooms</i> <b>2</b>	<i>Parkings</i> <b>2</b>
<i>Cellar</i> <b>1</b>	<i>Condition</i> <b>Luxurious services</b>
<i>Release date</i> <b>Décembre 2024</b>	<i>Ref.</i> <b>VCB - ONE - 03</b>

In the heart of the Carré d'Or, the One Monte-Carlo, designed by the famous British architect Sir Richard Rogers, offers to its residents unparalleled service. Occupying entire floors, these apartments enjoy impressive views of the Casino Gardens or the Gardens of Hermitage Hotel.

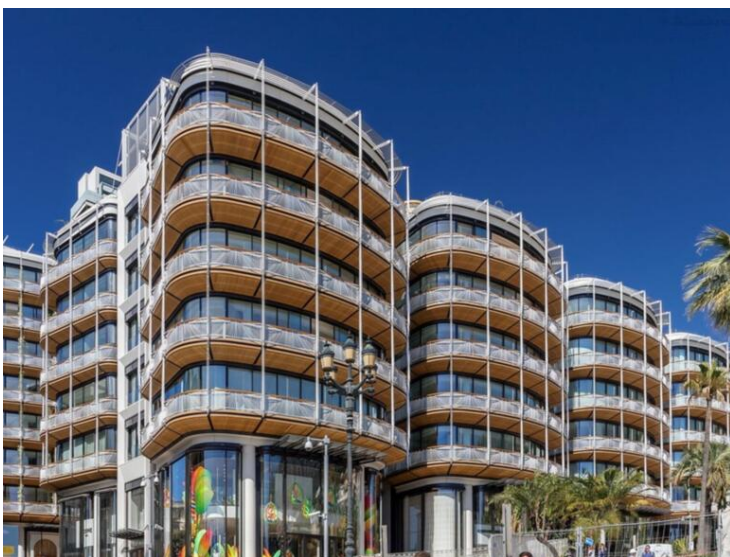
This magnificent and exclusive apartment is spread over the entire floor, and is composed as follows: an entrance, a double living-dining room, a separate kitchen, an office, a master bedroom with bathroom and ensuite shower as well as two dressing rooms, second bedroom with bathroom and shower as well as a dressing room and guest toilet.

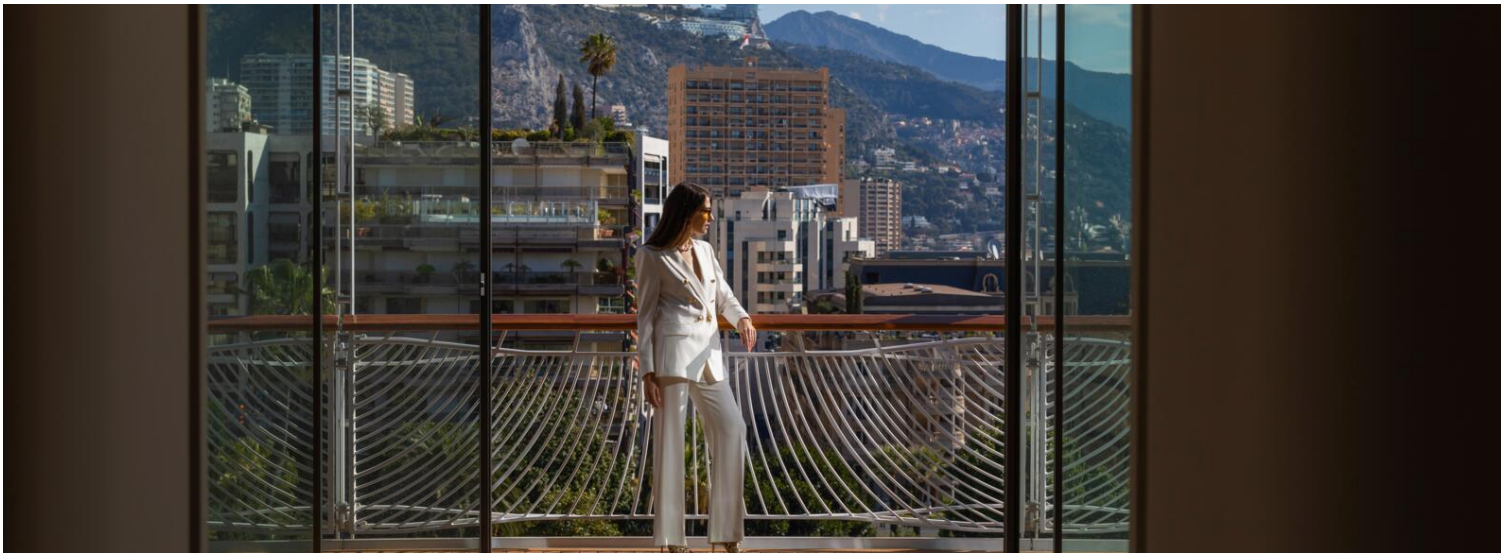


Tenants have access to a level of service unrivalled in the Principality with a 24/7 concierge service, a valet parking, as well as access to the swimming pool and fitness room of the Thermes Marins. They can also take advantage of the cleaning and laundry services as well as the room service of the Hôtel de Paris.

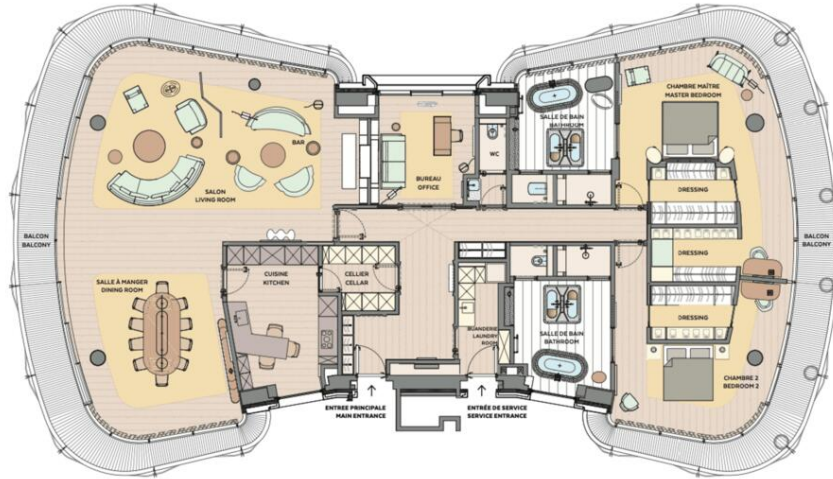
The apartments are designed with noble and modern materials. The huge bay windows that surround the building provide light throughout the day. These properties are rented with contemporary fitted kitchens. And parking spaces are available in the building.







one  
MONTE  
CARLO



Place du Casino  
Principauté de Monaco

APPARTEMENT PLATEAU COMPLET  
2 CHAMBRES  
FULL FLOOR APARTMENT  
2 BEDROOMS

SURFACE HABITABLE  
INTERNAL AREA  
298 m<sup>2</sup>

SURFACE EXTÉRIEURE  
EXTERNAL AREA  
78 m<sup>2</sup>

