



BEVERLY PALACE - Studio with Garden

2 900 € / month
(Service charges included)

Furnished rental

<i>Product type</i> Apartment	<i>Num rooms</i> Studio
<i>Building</i> Beverly Palace bloc A	<i>District</i> Moneghetti
<i>Living area</i> 24 m²	<i>Garden area</i> 17 m²
<i>Total area</i> 41 m²	<i>Cellar</i> 1
<i>Floor</i> rez de jardin	<i>Condition</i> Good condition
<i>Furnished</i> Yes	<i>Mixed use</i> Yes
<i>Release date</i> Now	<i>Ref.</i> LGR - BEV2.5

Lovely little studio apartment with garden space

41m² studio with private garden located in the popular residence of the Beverly Palace.

Renovated apartment, fully furnished and equipped. Very quiet and bright rented with a large cellar.

Double front door, double sofa bed, armored electric blinds.



Large marble bathroom with bathtub and shower. Marble floor. Washing machine, dishwasher, reversible air conditioning.

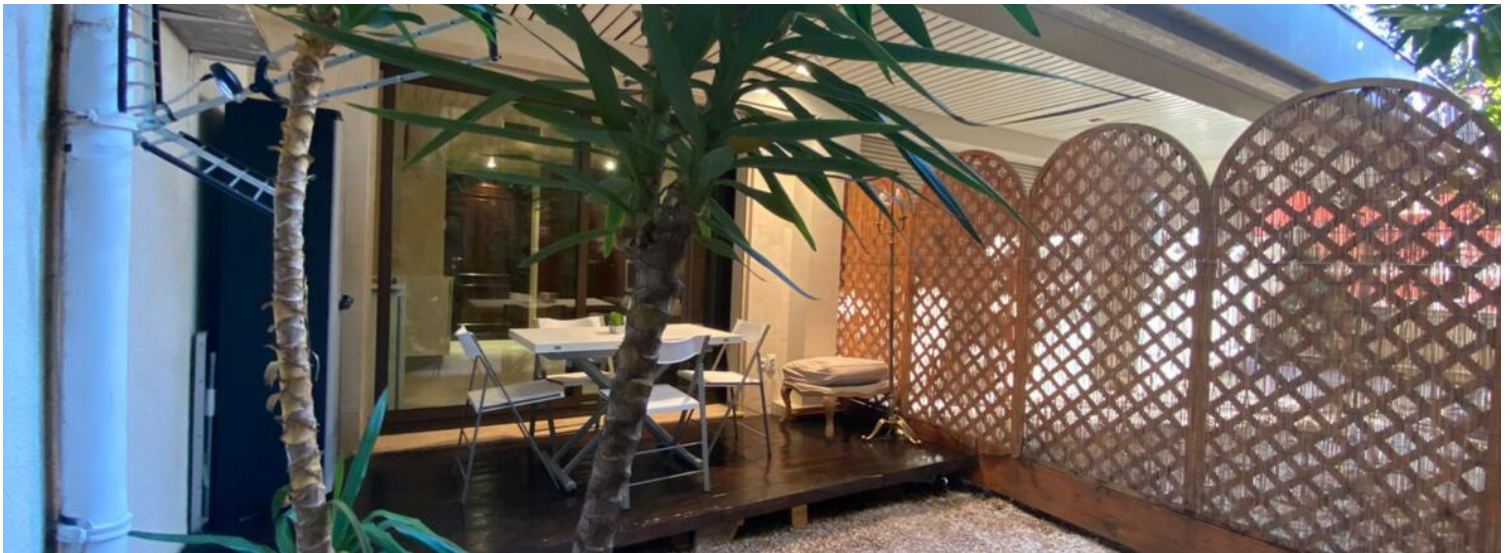
Ideally located near public lifts Quick access to the port and Fontvieille.

Pets welcome.

Mixed use possible

24-hour concierge







BEVERLY PALACE

Immeuble A: 13 bd de Belgique
18 rue Bosio

NOM
BLOC A
ETAGE BEZ DE JARDIN
APPARTEMENT AR^{ter}
LOT N°.

