

Titien - Offices with Garden View

Professional sale

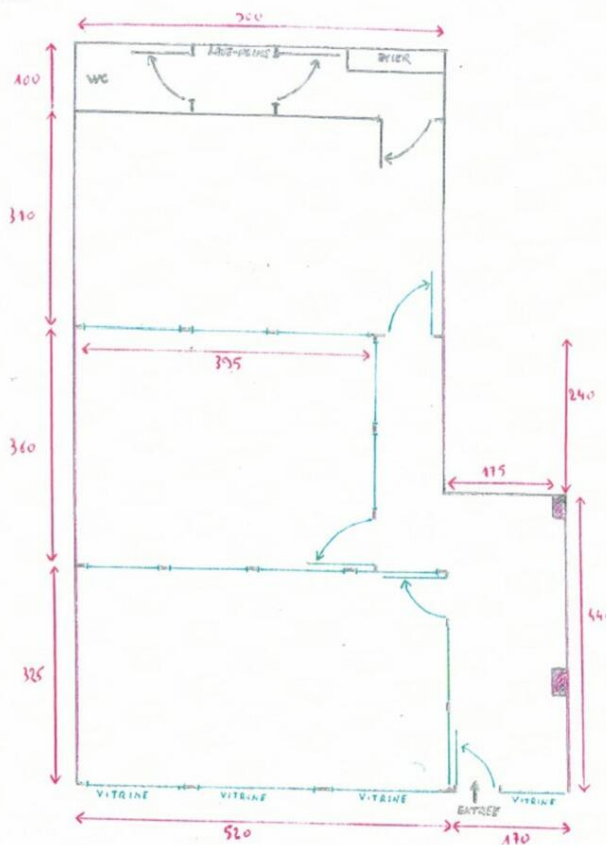
2 491 000 €

<i>Product type</i> Office	<i>Num rooms</i> 3 rooms	<i>Building</i> Titien	<i>District</i> Fontvieille
<i>Living area</i> 63 m²	<i>Annual costs</i> 6 000 €	<i>Release date</i> 15/05/2025	<i>Ref.</i> HP-VTI714

Fontvieille, in a building of 'Néoprovençale' style built in 1970 on 8 floors, with concierge, enjoying loggias overlooking the gardens.

With a surface area of 63 sqm this office in excellent condition consists of a main room divided into three offices partitioned by windows, a kitchenette, a toilet and a large showcase.





TITEN 7A4
BUREAU

