



PRESTIGIOUS 5-ROOM APARTMENT IN THE RESIDENCE OF THE METROPOLIS

92 000 € / month

+ Service charges : 7.000 €

Rental

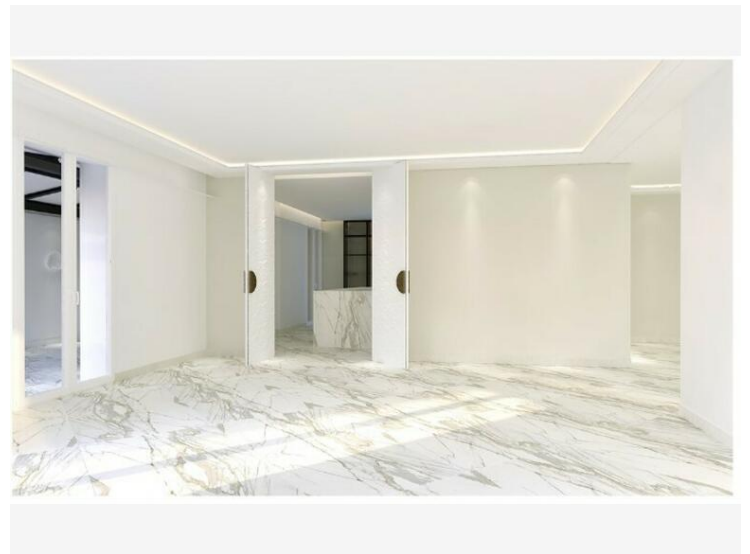
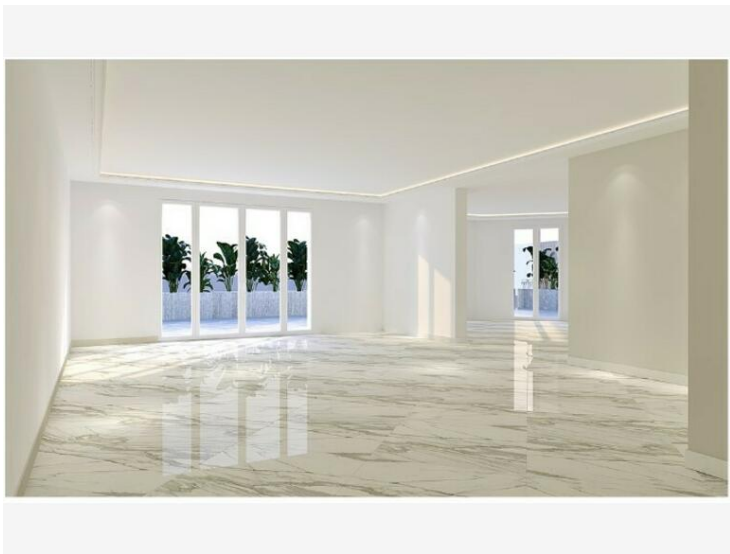
<i>Product type</i> Apartment	<i>Num rooms</i> 5 rooms
<i>Building</i> Le Metropole	<i>District</i> Carré d'Or
<i>Living area</i> 320 m²	<i>Terrace area</i> 108,70 m²
<i>Total area</i> 428,70 m²	<i>Bedrooms</i> 3
<i>Bathrooms</i> 3	<i>Cellar</i> 1
<i>Box</i> 3	<i>Floor</i> 4
<i>Service charges</i> 7 000 €	<i>Condition</i> Luxurious services
<i>Release date</i> Shortly	<i>Ref.</i> BQMC-AL357L

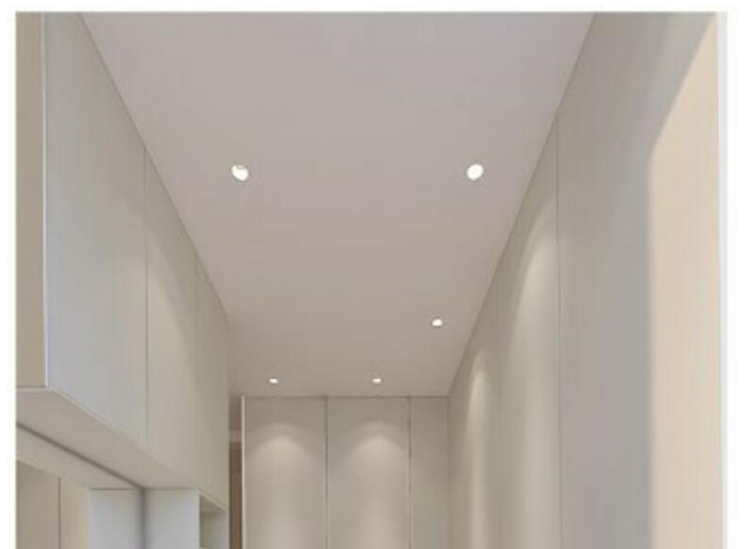
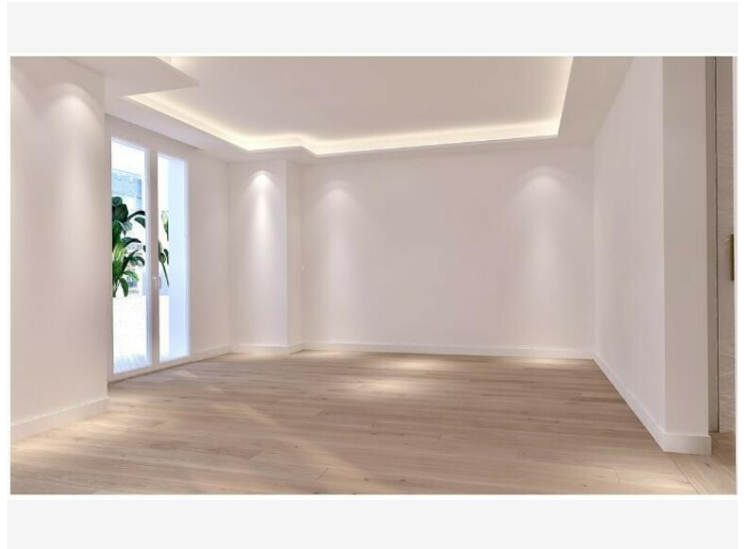
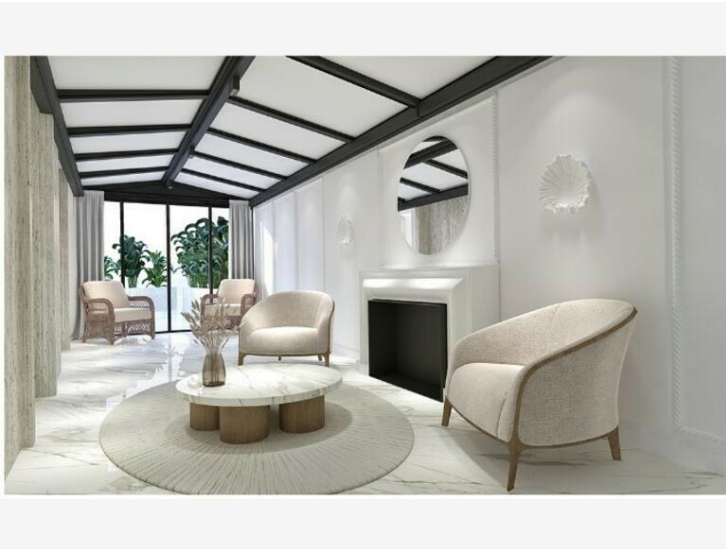
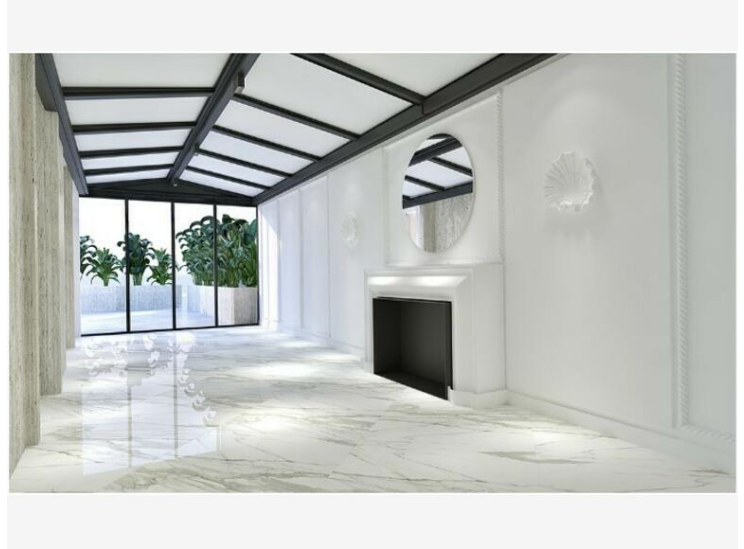
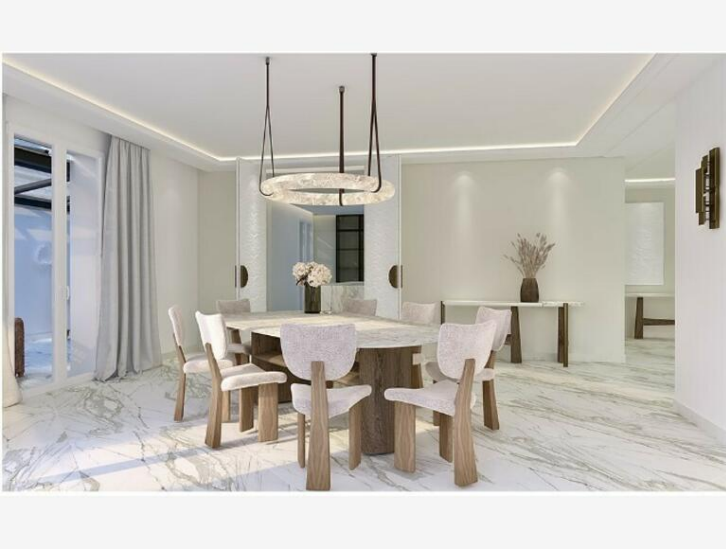
IN THE HEART OF THE CARRÉ D'OR
HUGE AND EXCEPTIONAL APARTMENT

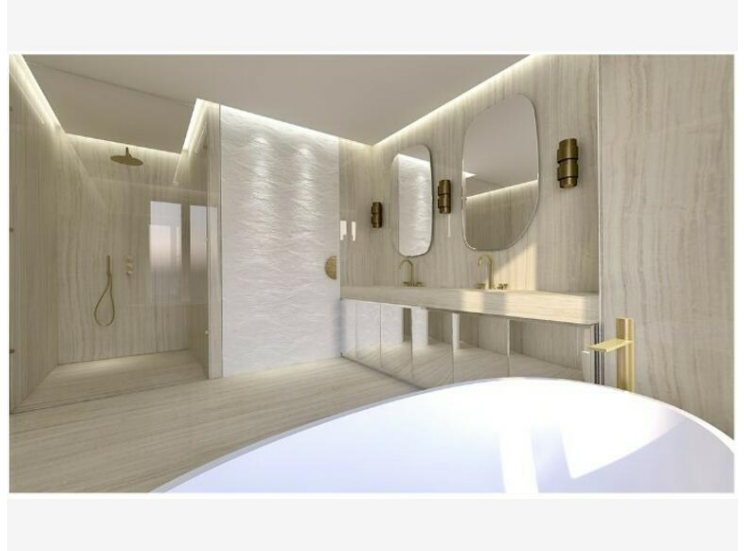
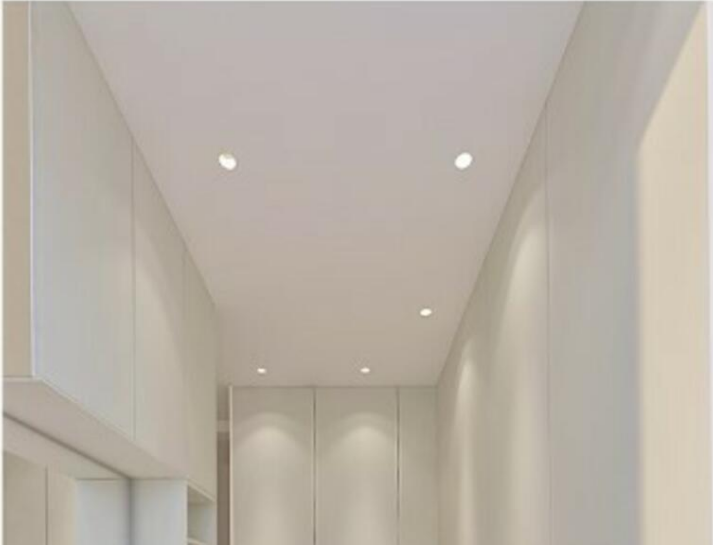
Splendid and exceptional apartment located in the prestigious Metropole Residence offering exceptional services, with concierge and security guards on site 24 hours a day, with privileged access to the services of



the Metropole Palace hotel restaurants and bars as well as the swimming pool, the Givenchy spa area and fitness room. The Residence is also connected to the Metropole gallery with its luxury boutiques. The apartment is located on the 4th floor and has just been completely redone and decorated by a renowned Parisian decorator, under the supervision of an architect, luxurious finishes, air conditioning
Total surface area of 429 m2 including 295 m2 indoors + 25 m2 in veranda, i.e. 320 M2 in internal area + 108 m2 of terraces, the apartment is delivered empty of furniture. It consists of an entrance hall, a living room, a dining room opening onto a terrace, a fully equipped kitchen and a laundry room, 3 bedrooms with bathroom, dressing rooms and separate toilets en suite, a guest toilet, 2 other terraces in front of the bedrooms. 1 cellar and 3 closed boxes included with direct access by elevator
3-year lease
Possibility of annexing the neighboring apartment composed of 2 rooms









5 PIÈCES +
ROOMS +

4^e étage
4th floor



EXPOSITION EXPOSURE	SUD - OUEST SOUTH-WEST
SURFACE INTÉRIEURE INTERIOR SURFACE	295,00 M ²
SURFACE VÉRANDA VERANDA SURFACE	25,00 M ²
SURFACE GLOBALE TOTAL SURFACE	428,70 M ²

