

Château Périgord II - Duplex Renovated Penthouse

Rental

Sole agent

Rent on request

Product type Apartment	Num rooms 5 rooms	Building Château Perigord II	District La Rousse - Saint Roman
Living area 189 m²	Terrace area 61 m²	Total area 250 m²	Bedrooms 4
Bathrooms 3	Parking 1	Cellar 1	Service charges 850 €
Condition New	Release date 01/12/2024	Ref. HP-LCP1000	

La Rousse district, in a luxury 35-storey building from 1973 with H24 concierge.

This magnificent duplex-penthouse with a living area of 189 sqm and 61 sqm of terraces is being renovated with high-end materials and quality finishes.

Located on the 34th and 35th floors, this exceptional apartment enjoys a breathtaking panoramic sea view and optimal sunshine.

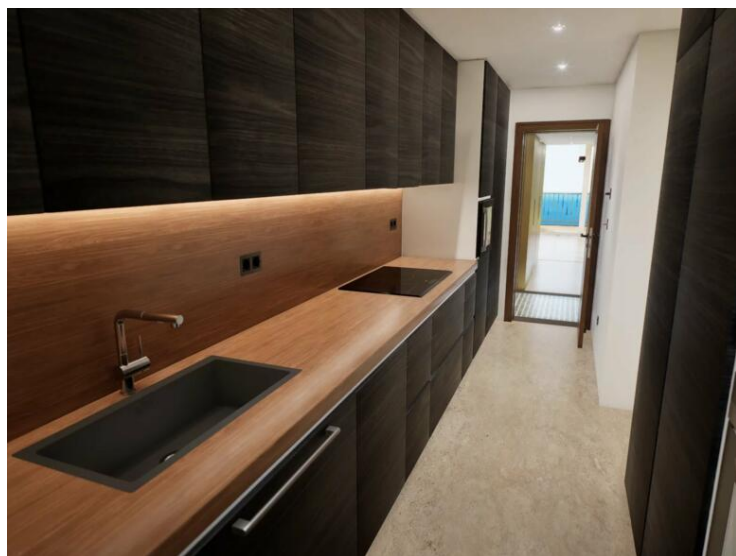
It is composed on the first level: an entrance hall with a dressing room and a guest toilet, a large double living room with sea view, an independant Bulthaup fully equipped kitchen, a bedroom, a shower room, an architect's staircase leading to the second level.

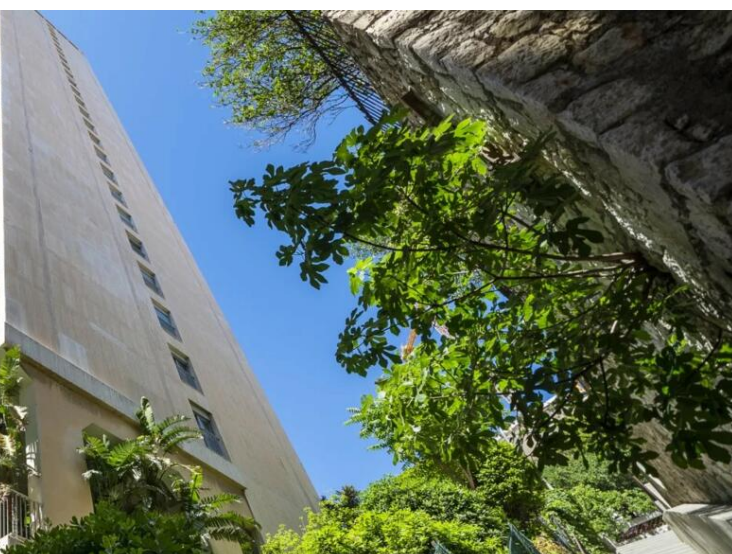
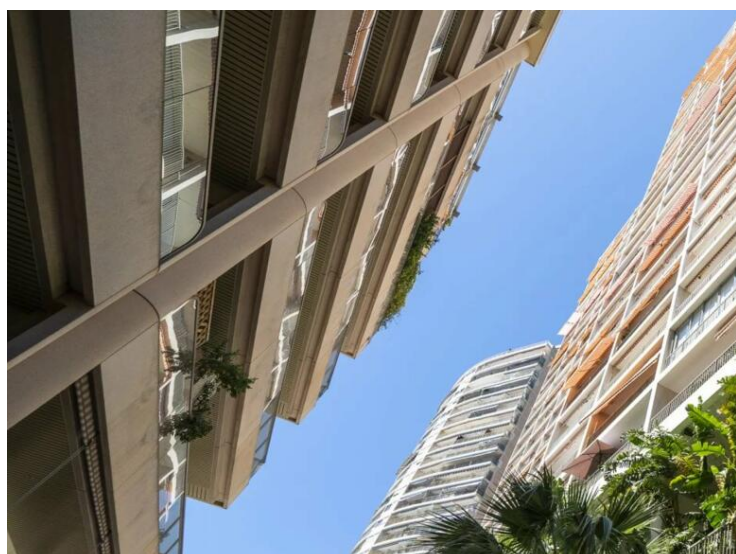
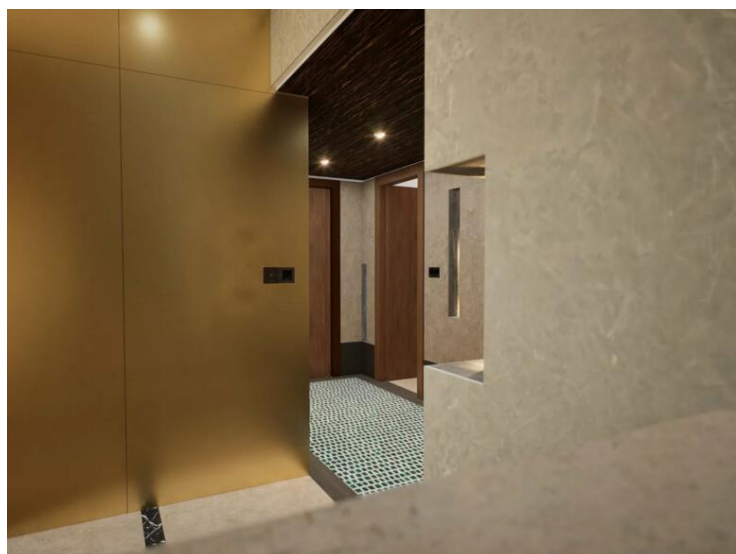
On the second level: a private living room / library, a master bedroom with a dressing room and a shower room, two bedrooms, a bathroom and a separate toilet.

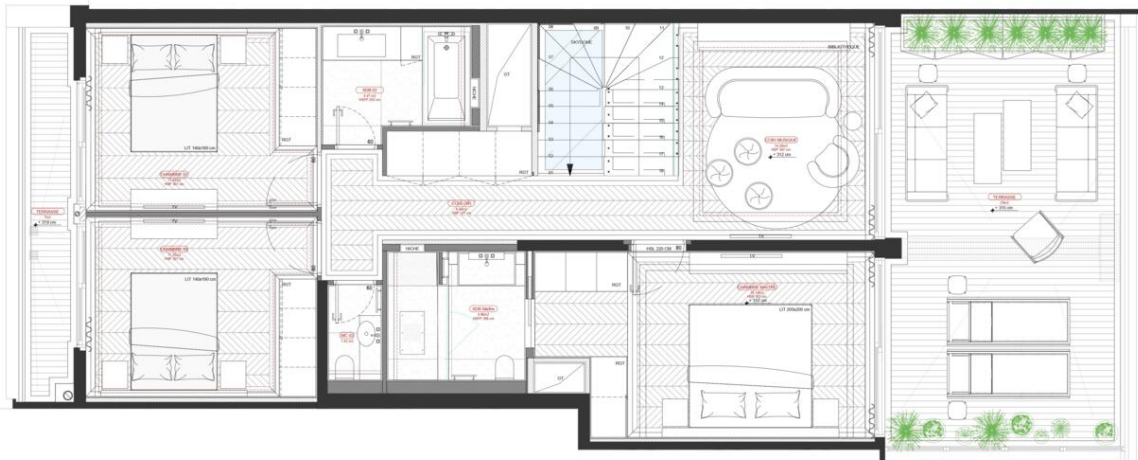


All livable rooms have a terrace access.

A car park and two cellars in the building.







1 PLAN PROJET R+1

SCALE 1:50



1 PLAN PROJET RDC

SCALE 1:50



